

DATASHEET

ESP NL Rabbit Polyclonal Antibody

CAT. NO. APA17801

KEY FEATURES

Target	ESP NL	Source / Host	Rabbit
Reactivity	Human, Mouse	Clonality	Polyclonal
Applications	WB	Conjugation	Unconjugated
Form / Buffer	Liquid in 0.42% Potassium phosphate, 0.87% Sodium chloride, pH 7.3, 30% glycerol, and 0.01% sodium azide.		Storage at -20°C

BACKGROUND

Binds to but does not cross-link actin. Required for the formation and maintenance of inner ear hair cell stereocilia and staircase formation. Essential for normal hearing.

APPLICATION

To ensure optimal assay performance, AREX recommends conducting reagent titration tailored to each testing system for optimal detection results.

WB	1:500 - 1:1000
----	----------------

*Results are sample-specific. Please refer to your local assay conditions and test parameters for reference.

PRODUCT OVERVIEW

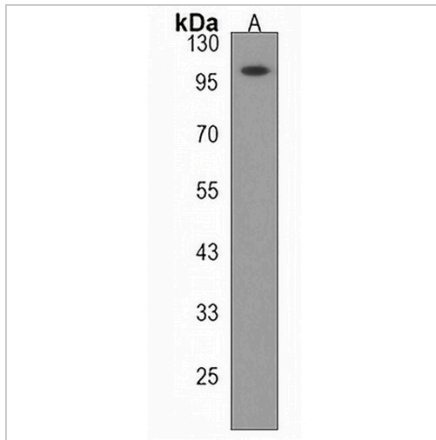
Description	Rabbit polyclonal antibody to ESP NL
Specificity	Recognizes endogenous levels of ESP NL protein.
Antibody Type	Primary antibody
Immunogen	KLH-conjugated synthetic peptide encompassing a sequence within the C-terminal region of human ESP NL. The exact sequence is proprietary.
Purification	The antibody was purified by immunogen affinity chromatography.
Molecular Weight	Predicted: 108 kD; Observed: 108 kD
Form/Buffer	Liquid in 0.42% Potassium phosphate, 0.87% Sodium chloride, pH 7.3, 30% glycerol, and 0.01% sodium azide.
Alternative Names	Espin-like protein
Gene Symbol	ESP NL
Entrez Gene	339768(Human); 227357(Mouse)
SwissProt	Q6ZVH7(Human); Q3UYR4(Mouse)

*AREX continuously optimizes our products. Webpage content may not reflect the latest updates. For inquiries, please contact info@arexbio.com or your local distributor.

*Clone Number, Reactivity, Source/Host and Clonality can be found in the product name and Key Features section above.

DATASHEET**ESP NL Rabbit Polyclonal Antibody**

CAT. NO. APA17801

DATA

Western blot analysis of ESP NL expression in human ovary (A) whole cell lysates.
(Predicted band size: 108 kD; Observed band size: 108 kD)

STORAGE

Store at 4°C short term. For long term storage, store at -20°C, avoiding freeze/thaw cycles.

NOTE

For Research Use Only. Not for diagnostic, therapeutics, prophylactic or in vivo use.