

**DATASHEET**

**C12orf56 Rabbit Polyclonal Antibody**

CAT. NO. APA17802

**KEY FEATURES**

Target	C12orf56	Source / Host	Rabbit
Reactivity	Human, Mouse	Clonality	Polyclonal
Applications	WB	Conjugation	Unconjugated
Form / Buffer	Liquid in 0.42% Potassium phosphate, 0.87% Sodium chloride, pH 7.3, 30% glycerol, and 0.01% sodium azide.		Storage at -20°C

**BACKGROUND**

chromosome 12 open reading frame 56. Also known as: uncharacterized protein C12orf56.

**APPLICATION**

To ensure optimal assay performance, AREX recommends conducting reagent titration tailored to each testing system for optimal detection results.

WB	1:500 - 1:1000
----	----------------

\*Results are sample-specific. Please refer to your local assay conditions and test parameters for reference.

**PRODUCT OVERVIEW**

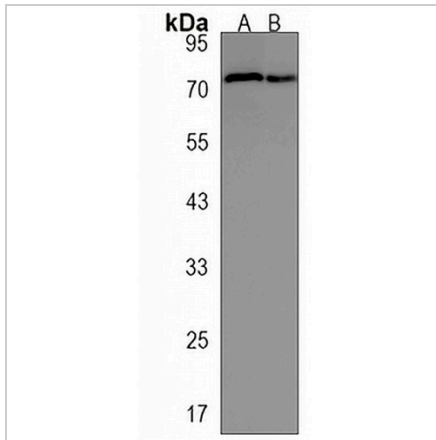
Description	Rabbit polyclonal antibody to C12orf56
Specificity	Recognizes endogenous levels of C12orf56 protein.
Antibody Type	Primary antibody
Immunogen	KLH-conjugated synthetic peptide encompassing a sequence within the N-terminal region of human C12orf56. The exact sequence is proprietary.
Purification	The antibody was purified by immunogen affinity chromatography.
Molecular Weight	Predicted: 71 kD; Observed: 72 kD
Form/Buffer	Liquid in 0.42% Potassium phosphate, 0.87% Sodium chloride, pH 7.3, 30% glycerol, and 0.01% sodium azide.
Alternative Names	Uncharacterized protein C12orf56
Gene Symbol	C12orf56
Entrez Gene	115749(Human); 216393(Mouse)
SwissProt	Q8IXR9(Human); Q8CCC3(Mouse)

\*AREX continuously optimizes our products. Webpage content may not reflect the latest updates. For inquiries, please contact [info@arexbio.com](mailto:info@arexbio.com) or your local distributor.

\*Clone Number, Reactivity, Source/Host and Clonality can be found in the product name and Key Features section above.

**DATASHEET****C12orf56 Rabbit Polyclonal Antibody**

CAT. NO. APA17802

**DATA**

Western blot analysis of C12orf56 expression in K562 (A), SKBR3 (B) whole cell lysates. (Predicted band size: 71 kD; Observed band size: 72 kD)

**STORAGE**

Store at 4°C short term. For long term storage, store at -20°C, avoiding freeze/thaw cycles.

**NOTE**

For Research Use Only. Not for diagnostic, therapeutics, prophylactic or in vivo use.