

DATASHEET

PPP1R42 Rabbit Polyclonal Antibody

CAT. NO. APA17817

KEY FEATURES

Target	PPP1R42	Source / Host	Rabbit
Reactivity	Human	Clonality	Polyclonal
Applications	WB	Conjugation	Unconjugated
Form / Buffer	Liquid in 0.42% Potassium phosphate, 0.87% Sodium chloride, pH 7.3, 30% glycerol, and 0.01% sodium azide.		Storage at -20°C

BACKGROUND

Regulates phosphatase activity of protein phosphatase 1 (PP1) complexes in the testis.

APPLICATION

To ensure optimal assay performance, AREX recommends conducting reagent titration tailored to each testing system for optimal detection results.

WB	1:500 - 1:1000
----	----------------

*Results are sample-specific. Please refer to your local assay conditions and test parameters for reference.

PRODUCT OVERVIEW

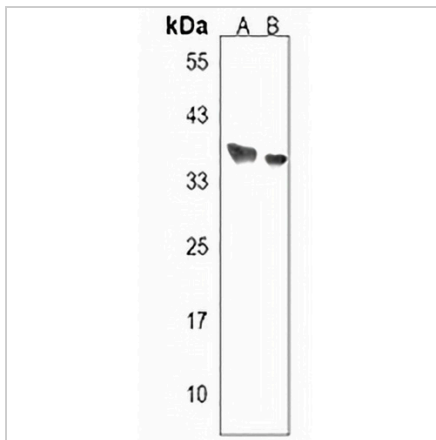
Description	Rabbit polyclonal antibody to PPP1R42
Specificity	Recognizes endogenous levels of PPP1R42 protein.
Antibody Type	Primary antibody
Immunogen	KLH-conjugated synthetic peptide encompassing a sequence within the C-terminal region of human PPP1R42. The exact sequence is proprietary.
Purification	The antibody was purified by immunogen affinity chromatography.
Molecular Weight	Predicted: 35 kD; Observed: 38 kD
Form/Buffer	Liquid in 0.42% Potassium phosphate, 0.87% Sodium chloride, pH 7.3, 30% glycerol, and 0.01% sodium azide.
Alternative Names	LRRC67; Protein phosphatase 1 regulatory subunit 42; Leucine-rich repeat-containing protein 67
Gene Symbol	PPP1R42
Entrez Gene	286187(Human)
SwissProt	Q7Z4L9(Human)

*AREX continuously optimizes our products. Webpage content may not reflect the latest updates. For inquiries, please contact info@arexbio.com or your local distributor.

*Clone Number, Reactivity, Source/Host and Clonality can be found in the product name and Key Features section above.

DATASHEET**PPP1R42 Rabbit Polyclonal Antibody**

CAT. NO. APA17817

DATA

Western blot analysis of PPP1R42 expression in A549 (A), NCIH292 (B) whole cell lysates. (Predicted band size: 35 kD; Observed band size: 38 kD)

STORAGE

Store at 4°C short term. For long term storage, store at -20°C, avoiding freeze/thaw cycles.

NOTE

For Research Use Only. Not for diagnostic, therapeutics, prophylactic or in vivo use.