

**DATASHEET**

**SOX15 Rabbit Polyclonal Antibody**

CAT. NO. APA17820

**KEY FEATURES**

Target	SOX15	Source / Host	Rabbit
Reactivity	Human, Mouse	Clonality	Polyclonal
Applications	WB, IHC	Conjugation	Unconjugated
Form / Buffer	Liquid in 0.42% Potassium phosphate, 0.87% Sodium chloride, pH 7.3, 30% glycerol, and 0.01% sodium azide.		Storage at -20°C

**BACKGROUND**

Transcription factor that binds to DNA at the 5'-AACAAATG-3' consensus sequence . Acts as a transcriptional activator and repressor . Binds synergistically with POU5F1 (OCT3/4) to gene promoters . Binds to the FOXP1 promoter and recruits FHL3, resulting in transcriptional activation of FOXP1 which leads to myoblast proliferation . Acts as an inhibitor of myoblast differentiation via transcriptional repression which leads to down-regulation of the muscle-specific genes MYOD and MYOG . Involved in trophoblast giant cell differentiation via enhancement of HAND1 transcriptional activity . Regulates transcription of HRC via binding to its proximal enhancer region . Involved in skeletal muscle regeneration . Also plays a role in the development of myogenic precursor cells .

**APPLICATION**

To ensure optimal assay performance, AREX recommends conducting reagent titration tailored to each testing system for optimal detection results.

WB	1:500 - 1:1000
IHC	1:50 - 1:200

\*Results are sample-specific. Please refer to your local assay conditions and test parameters for reference.

**PRODUCT OVERVIEW**

Description	Rabbit polyclonal antibody to SOX15
Specificity	Recognizes endogenous levels of SOX15 protein.
Antibody Type	Primary antibody
Immunogen	KLH-conjugated synthetic peptide encompassing a sequence within the Central region of human SOX15. The exact sequence is proprietary.
Purification	The antibody was purified by immunogen affinity chromatography.
Molecular Weight	Predicted: 25 kD; Observed: 32 kD
Form/Buffer	Liquid in 0.42% Potassium phosphate, 0.87% Sodium chloride, pH 7.3, 30% glycerol, and 0.01% sodium azide.
Alternative Names	SOX12; SOX20; SOX26; SOX27; Protein SOX-15; Protein SOX-12; Protein SOX-20
Gene Symbol	SOX15
Entrez Gene	6665(Human); 20670(Mouse)
SwissProt	O60248(Human); P43267(Mouse)

\*AREX continuously optimizes our products. Webpage content may not reflect the latest updates. For inquiries, please contact [info@arexbio.com](mailto:info@arexbio.com) or your local distributor.

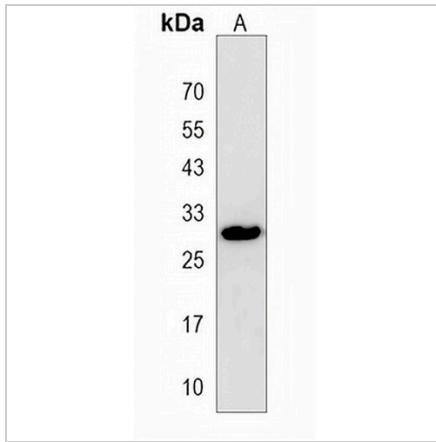
\*Clone Number, Reactivity, Source/Host and Clonality can be found in the product name and Key Features section above.

**DATASHEET**

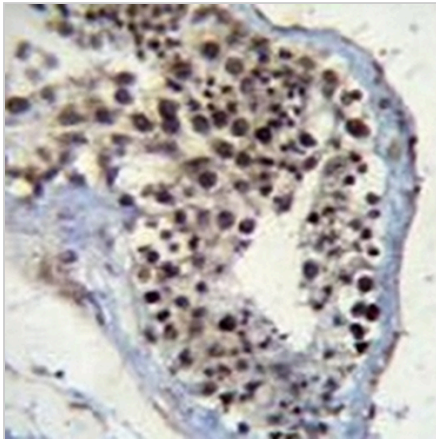
**SOX15 Rabbit Polyclonal Antibody**

CAT. NO. APA17820

**DATA**



Western blot analysis of SOX15 expression in human brain (A) whole cell lysates. (Predicted band size: 25 kD; Observed band size: 32 kD)



Immunohistochemical analysis of SOX15 staining in human testis formalin fixed paraffin embedded tissue section. The section was pre-treated using heat mediated antigen retrieval with sodium citrate buffer (pH 6.0). The section was then incubated with the antibody at room temperature and detected using an HRP conjugated compact polymer system. DAB was used as the chromogen. The section was then counterstained with haematoxylin and mounted with DPX.

**STORAGE**

Store at 4°C short term. For long term storage, store at -20°C, avoiding freeze/thaw cycles.

**NOTE**

For Research Use Only. Not for diagnostic, therapeutics, prophylactic or in vivo use.