

DATASHEET

TTLL4 Rabbit Polyclonal Antibody

CAT. NO. APA17831

KEY FEATURES

Target	TTLL4	Source / Host	Rabbit
Reactivity	Human	Clonality	Polyclonal
Applications	WB	Conjugation	Unconjugated
Form / Buffer	Liquid in 0.42% Potassium phosphate, 0.87% Sodium chloride, pH 7.3, 30% glycerol, and 0.01% sodium azide.		Storage at-20°C

BACKGROUND

Monoglutamylase which modifies both tubulin and non-tubulin proteins, adding a single glutamate on the gamma-carboxyl group of specific glutamate residues of target proteins. Involved in the side-chain initiation step of the polyglutamylation reaction but not in the elongation step. Preferentially modifies beta-tail tubulin over the alpha-tubulin. Monoglutamylates nucleosome assembly proteins NAP1L1 and NAP1L4. Monoglutamylates nucleotidyltransferase CGAS, leading to inhibition of CGAS catalytic activity, thereby preventing antiviral defense function. Involved in KLF4 glutamylation which impedes its ubiquitination, thereby leading to somatic cell reprogramming, pluripotency maintenance and embryogenesis.

APPLICATION

To ensure optimal assay performance, AREX recommends conducting reagent titration tailored to each testing system for optimal detection results.

WB	1:500 - 1:1000
----	----------------

*Results are sample-specific. Please refer to your local assay conditions and test parameters for reference.

PRODUCT OVERVIEW

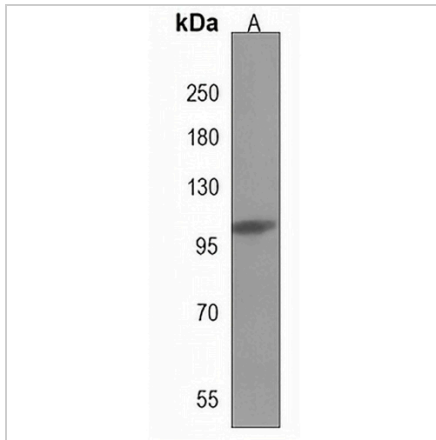
Description	Rabbit polyclonal antibody to TTLL4
Specificity	Recognizes endogenous levels of TTLL4 protein.
Antibody Type	Primary antibody
Immunogen	KLH-conjugated synthetic peptide encompassing a sequence within the Central region of human TTLL4. The exact sequence is proprietary.
Purification	The antibody was purified by immunogen affinity chromatography.
Molecular Weight	Predicted: 133 kD; Observed: 100 kD
Form/Buffer	Liquid in 0.42% Potassium phosphate, 0.87% Sodium chloride, pH 7.3, 30% glycerol, and 0.01% sodium azide.
Alternative Names	KIAA0173; Tubulin polyglutamylase TTLL4; Tubulin--tyrosine ligase-like protein 4
Gene Symbol	TTLL4
Entrez Gene	9654(Human)
SwissProt	Q14679(Human)

*AREX continuously optimizes our products. Webpage content may not reflect the latest updates. For inquiries, please contact info@arexbio.com or your local distributor.

*Clone Number, Reactivity, Source/Host and Clonality can be found in the product name and Key Features section above.

DATASHEET**TTLL4 Rabbit Polyclonal Antibody**

CAT. NO. APA17831

DATA

Western blot analysis of TTLL4 expression in HL60 (A) whole cell lysates. (Predicted band size: 133 kD; Observed band size: 100 kD)

STORAGE

Store at 4°C short term. For long term storage, store at -20°C, avoiding freeze/thaw cycles.

NOTE

For Research Use Only. Not for diagnostic, therapeutics, prophylactic or in vivo use.