

DATASHEET

SLC38A8 Rabbit Polyclonal Antibody

CAT. NO. APA17844

KEY FEATURES

Target	SLC38A8	Source / Host	Rabbit
Reactivity	Human	Clonality	Polyclonal
Applications	WB	Conjugation	Unconjugated
Form / Buffer	Liquid in 0.42% Potassium phosphate, 0.87% Sodium chloride, pH 7.3, 30% glycerol, and 0.01% sodium azide.		Storage at -20°C

BACKGROUND

Electrogenic sodium-dependent amino acid transporter with a preference for L-glutamine, L-alanine, L-histidine, L-aspartate and L-arginine. May facilitate glutamine uptake in both excitatory and inhibitory neurons. The transport mechanism and stoichiometry remain to be elucidated.

APPLICATION

To ensure optimal assay performance, AREX recommends conducting reagent titration tailored to each testing system for optimal detection results.

WB	1:500 - 1:1000
----	----------------

*Results are sample-specific. Please refer to your local assay conditions and test parameters for reference.

PRODUCT OVERVIEW

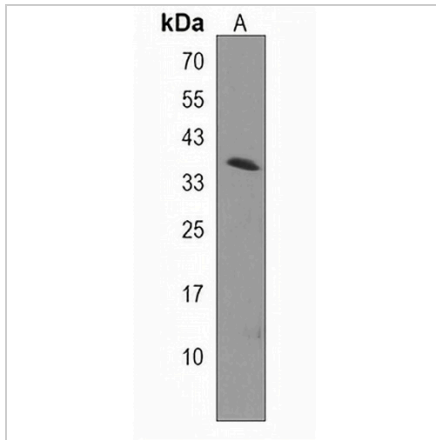
Description	Rabbit polyclonal antibody to SLC38A8
Specificity	Recognizes endogenous levels of SLC38A8 protein.
Antibody Type	Primary antibody
Immunogen	KLH-conjugated synthetic peptide encompassing a sequence within the Central region of human SLC38A8. The exact sequence is proprietary.
Purification	The antibody was purified by immunogen affinity chromatography.
Molecular Weight	Predicted: 46 kD; Observed: 37 kD
Form/Buffer	Liquid in 0.42% Potassium phosphate, 0.87% Sodium chloride, pH 7.3, 30% glycerol, and 0.01% sodium azide.
Alternative Names	Putative sodium-coupled neutral amino acid transporter 8; Solute carrier family 38 member 8
Gene Symbol	SLC38A8
Entrez Gene	146167(Human)
SwissProt	A6NNN8(Human)

*AREX continuously optimizes our products. Webpage content may not reflect the latest updates. For inquiries, please contact info@arexbio.com or your local distributor.

*Clone Number, Reactivity, Source/Host and Clonality can be found in the product name and Key Features section above.

DATASHEET**SLC38A8 Rabbit Polyclonal Antibody**

CAT. NO. APA17844

DATA

Western blot analysis of SLC38A8 expression in human placenta (A) whole cell lysates.
(Predicted band size: 46 kD; Observed band size: 37 kD)

STORAGE

Store at 4°C short term. For long term storage, store at -20°C, avoiding freeze/thaw cycles.

NOTE

For Research Use Only. Not for diagnostic, therapeutics, prophylactic or in vivo use.