

DATASHEET

FAM188B2 Rabbit Polyclonal Antibody

CAT. NO. APA17845

KEY FEATURES

Target	FAM188B2	Source / Host	Rabbit
Reactivity	Human	Clonality	Polyclonal
Applications	WB	Conjugation	Unconjugated
Form / Buffer	Liquid in 0.42% Potassium phosphate, 0.87% Sodium chloride, pH 7.3, 30% glycerol, and 0.01% sodium azide.		Storage at -20°C

BACKGROUND

Inactive ubiquitin carboxyl-terminal hydrolase MINDY-4B (MINDY4B), also known as Protein FAM188B2. Belongs to the MINDY deubiquitinase family. FAM188 subfamily

APPLICATION

To ensure optimal assay performance, AREX recommends conducting reagent titration tailored to each testing system for optimal detection results.

WB	1:500 - 1:1000
----	----------------

*Results are sample-specific. Please refer to your local assay conditions and test parameters for reference.

PRODUCT OVERVIEW

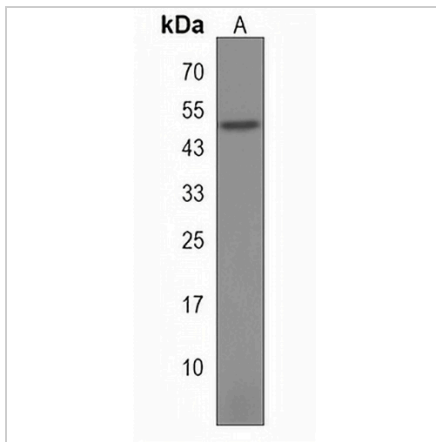
Description	Rabbit polyclonal antibody to FAM188B2
Specificity	Recognizes endogenous levels of FAM188B2 protein.
Antibody Type	Primary antibody
Immunogen	KLH-conjugated synthetic peptide encompassing a sequence within the C-terminal region of human FAM188B2. The exact sequence is proprietary.
Purification	The antibody was purified by immunogen affinity chromatography.
Molecular Weight	Predicted: 51 kD; Observed: 52 kD
Form/Buffer	Liquid in 0.42% Potassium phosphate, 0.87% Sodium chloride, pH 7.3, 30% glycerol, and 0.01% sodium azide.
Alternative Names	C3orf76; Protein FAM188B2
Gene Symbol	FAM188B2
Entrez Gene	646951(Human)
SwissProt	A8MYZ0(Human)

*AREX continuously optimizes our products. Webpage content may not reflect the latest updates. For inquiries, please contact info@arexbio.com or your local distributor.

*Clone Number, Reactivity, Source/Host and Clonality can be found in the product name and Key Features section above.

DATASHEET**FAM188B2 Rabbit Polyclonal Antibody**

CAT. NO. APA17845

DATA

Western blot analysis of FAM188B2 expression in NCIH292 (A) whole cell lysates.
(Predicted band size: 51 kD; Observed band size: 52 kD)

STORAGE

Store at 4°C short term. For long term storage, store at -20°C, avoiding freeze/thaw cycles.

NOTE

For Research Use Only. Not for diagnostic, therapeutics, prophylactic or in vivo use.