

DATASHEET

SLC30A7 Rabbit Polyclonal Antibody

CAT. NO. APA17859

KEY FEATURES

Target	SLC30A7	Source / Host	Rabbit
Reactivity	Human	Clonality	Polyclonal
Applications	WB	Conjugation	Unconjugated
Form / Buffer	Liquid in 0.42% Potassium phosphate, 0.87% Sodium chloride, pH 7.3, 30% glycerol, and 0.01% sodium azide.		Storage at-20°C

BACKGROUND

Zinc ion transporter mediating zinc entry from the cytosol into the lumen of organelles along the secretory pathway . By contributing to zinc ion homeostasis within the early secretory pathway, regulates the activation and folding of enzymes like alkaline phosphatases .

APPLICATION

To ensure optimal assay performance, AREX recommends conducting reagent titration tailored to each testing system for optimal detection results.

WB	1:500 - 1:1000
----	----------------

*Results are sample-specific. Please refer to your local assay conditions and test parameters for reference.

PRODUCT OVERVIEW

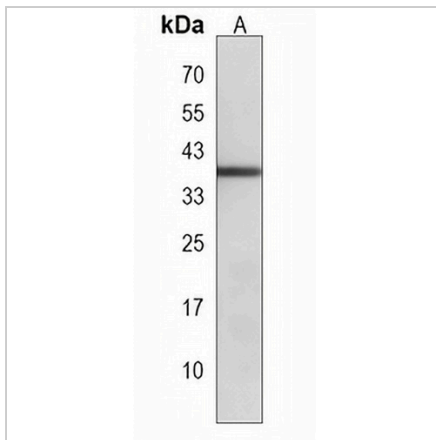
Description	Rabbit polyclonal antibody to SLC30A7
Specificity	Recognizes endogenous levels of SLC30A7 protein.
Antibody Type	Primary antibody
Immunogen	KLH-conjugated synthetic peptide encompassing a sequence within the N-terminal region of human SLC30A7. The exact sequence is proprietary.
Purification	The antibody was purified by immunogen affinity chromatography.
Molecular Weight	Predicted: 41 kD; Observed: 38 kD
Form/Buffer	Liquid in 0.42% Potassium phosphate, 0.87% Sodium chloride, pH 7.3, 30% glycerol, and 0.01% sodium azide.
Alternative Names	ZNT7; ZNTL2; Zinc transporter 7; ZnT-7; Solute carrier family 30 member 7; Znt-like transporter 2
Gene Symbol	SLC30A7
Entrez Gene	148867(Human)
SwissProt	Q8NEW0(Human)

*AREX continuously optimizes our products. Webpage content may not reflect the latest updates. For inquiries, please contact info@arexbio.com or your local distributor.

*Clone Number, Reactivity, Source/Host and Clonality can be found in the product name and Key Features section above.

DATASHEET**SLC30A7 Rabbit Polyclonal Antibody**

CAT. NO. APA17859

DATA

Western blot analysis of SLC30A7 expression in rat pancreas (A) whole cell lysates.
(Predicted band size: 41 kD; Observed band size: 38 kD)

STORAGE

Store at 4°C short term. For long term storage, store at -20°C, avoiding freeze/thaw cycles.

NOTE

For Research Use Only. Not for diagnostic, therapeutics, prophylactic or in vivo use.