

DATASHEET

CTAGE5 Rabbit Polyclonal Antibody

CAT. NO. APA17860

KEY FEATURES

Target	CTAGE5	Source / Host	Rabbit
Reactivity	Human	Clonality	Polyclonal
Applications	WB, IHC	Conjugation	Unconjugated
Form / Buffer	Liquid in 0.42% Potassium phosphate, 0.87% Sodium chloride, pH 7.3, 30% glycerol, and 0.01% sodium azide.		Storage at-20°C

BACKGROUND

Plays a role in the transport of cargos that are too large to fit into COPII-coated vesicles and require specific mechanisms to be incorporated into membrane-bound carriers and exported from the endoplasmic reticulum . Plays a role in the secretion of lipoproteins, pre-chylomicrons and pre-VLDLs, by participating in their export from the endoplasmic reticulum . Thereby, may play a role in cholesterol and triglyceride homeostasis . Required for collagen VII (COL7A1) secretion by loading COL7A1 into transport carriers and recruiting PREB/SEC12 at the endoplasmic reticulum exit sites .

APPLICATION

To ensure optimal assay performance, AREX recommends conducting reagent titration tailored to each testing system for optimal detection results.

WB	1:500 - 1:1000
IHC	1:50 - 1:200

*Results are sample-specific. Please refer to your local assay conditions and test parameters for reference.

PRODUCT OVERVIEW

Description	Rabbit polyclonal antibody to CTAGE5
Specificity	Recognizes endogenous levels of CTAGE5 protein.
Antibody Type	Primary antibody,Tag
Immunogen	KLH-conjugated synthetic peptide encompassing a sequence within the C-terminal region of human CTAGE5. The exact sequence is proprietary.
Purification	The antibody was purified by immunogen affinity chromatography.
Molecular Weight	Predicted: 159 kD; Observed: 95 kD
Form/Buffer	Liquid in 0.42% Potassium phosphate, 0.87% Sodium chloride, pH 7.3, 30% glycerol, and 0.01% sodium azide.
Alternative Names	MEA11; MEA6; MGEA11; MGEA6; cTAGE family member 5; Protein cTAGE-5; Meningioma-expressed antigen 6/11
Gene Symbol	CTAGE5
Entrez Gene	4253(Human)
SwissProt	O15320(Human)

*AREX continuously optimizes our products. Webpage content may not reflect the latest updates. For inquiries, please contact info@arexbio.com or your local distributor.

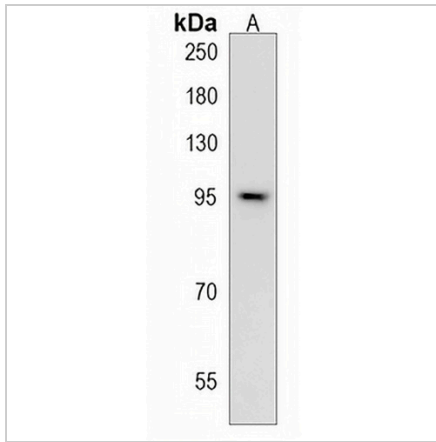
*Clone Number, Reactivity, Source/Host and Clonality can be found in the product name and Key Features section above.

DATASHEET

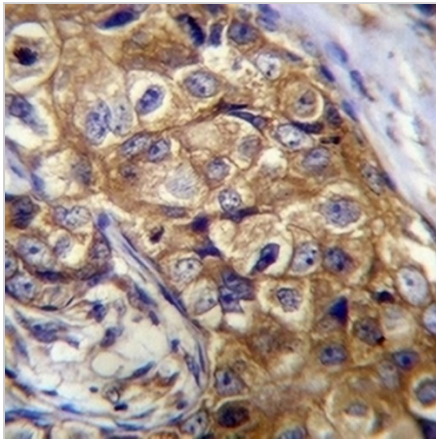
CTAGE5 Rabbit Polyclonal Antibody

CAT. NO. APA17860

DATA



Western blot analysis of CTAGE5 expression in MDAMB435 (A) whole cell lysates. (Predicted band size: 159 kD; Observed band size: 95 kD)



Immunohistochemical analysis of CTAGE5 staining in human breast carcinoma formalin fixed paraffin embedded tissue section. The section was pre-treated using heat mediated antigen retrieval with sodium citrate buffer (pH 6.0). The section was then incubated with the antibody at room temperature and detected using an HRP conjugated compact polymer system. DAB was used as the chromogen. The section was then counterstained with haematoxylin and mounted with DPX.

STORAGE

Store at 4°C short term. For long term storage, store at -20°C, avoiding freeze/thaw cycles.

NOTE

For Research Use Only. Not for diagnostic, therapeutics, prophylactic or in vivo use.