

DATASHEET

XYLT1 Rabbit Polyclonal Antibody

CAT. NO. APA17868

KEY FEATURES

Target	XYLT1	Source / Host	Rabbit
Reactivity	Human, Mouse, Rat	Clonality	Polyclonal
Applications	WB	Conjugation	Unconjugated
Form / Buffer	Liquid in 0.42% Potassium phosphate, 0.87% Sodium chloride, pH 7.3, 30% glycerol, and 0.01% sodium azide.		Storage at -20°C

BACKGROUND

Catalyzes the first step in the biosynthesis of chondroitin sulfate and dermatan sulfate proteoglycans, such as DCN. Transfers D-xylose from UDP-D-xylose to specific serine residues of the core protein. Required for normal embryonic and postnatal skeleton development, especially of the long bones. Required for normal maturation of chondrocytes during bone development, and normal onset of ossification.

APPLICATION

To ensure optimal assay performance, AREX recommends conducting reagent titration tailored to each testing system for optimal detection results.

WB	1:500 - 1:1000
----	----------------

*Results are sample-specific. Please refer to your local assay conditions and test parameters for reference.

PRODUCT OVERVIEW

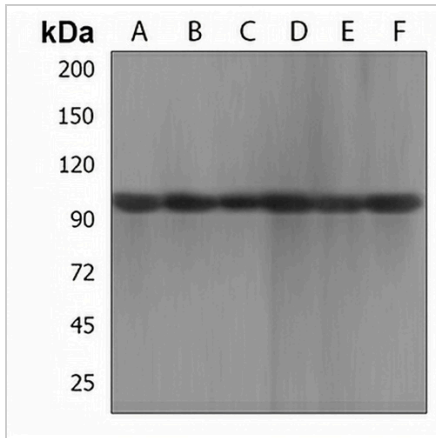
Description	Rabbit polyclonal antibody to XYLT1
Specificity	Recognizes endogenous levels of XYLT1 protein.
Antibody Type	Primary antibody
Immunogen	KLH-conjugated synthetic peptide encompassing a sequence within the N-terminal region of human XYLT1. The exact sequence is proprietary.
Purification	The antibody was purified by immunogen affinity chromatography.
Molecular Weight	Predicted: 107 kD; Observed: 107 kD
Form/Buffer	Liquid in 0.42% Potassium phosphate, 0.87% Sodium chloride, pH 7.3, 30% glycerol, and 0.01% sodium azide.
Alternative Names	XT1; Xylosyltransferase 1; Peptide O-xylosyltransferase 1; Xylosyltransferase I; XT-I; XylT-I
Gene Symbol	XYLT1
Entrez Gene	64131(Human); 233781(Mouse)
SwissProt	Q86Y38(Human); Q811B1(Mouse); Q9EPI1(Rat)

*AREX continuously optimizes our products. Webpage content may not reflect the latest updates. For inquiries, please contact info@arexbio.com or your local distributor.

*Clone Number, Reactivity, Source/Host and Clonality can be found in the product name and Key Features section above.

DATASHEET**XYLT1 Rabbit Polyclonal Antibody**

CAT. NO. APA17868

DATA

Western blot analysis of XYLT1 expression in NCIH460 (A), 293 (B), U87MG (C), PANC1 (D), mouse brain (E), rat brain (F) whole cell lysates. (Predicted band size: 107 kD; Observed band size: 107 kD)

STORAGE

Store at 4°C short term. For long term storage, store at -20°C, avoiding freeze/thaw cycles.

NOTE

For Research Use Only. Not for diagnostic, therapeutics, prophylactic or in vivo use.