

DATASHEET

LINGO4 Rabbit Polyclonal Antibody

CAT. NO. APA17872

KEY FEATURES

Target	LINGO4	Source / Host	Rabbit
Reactivity	Human, Mouse	Clonality	Polyclonal
Applications	WB, IHC	Conjugation	Unconjugated
Form / Buffer	Liquid in 0.42% Potassium phosphate, 0.87% Sodium chloride, pH 7.3, 30% glycerol, and 0.01% sodium azide.		Storage at -20°C

BACKGROUND

Leucine-rich repeat and immunoglobulin-like domain-containing nogo receptor-interacting protein 4 (LINGO4), also known as Leucine-rich repeat neuronal protein 6D. Subcellular location: Membrane

APPLICATION

To ensure optimal assay performance, AREX recommends conducting reagent titration tailored to each testing system for optimal detection results.

WB	1:500 - 1:1000
IHC	1:50 - 1:200

*Results are sample-specific. Please refer to your local assay conditions and test parameters for reference.

PRODUCT OVERVIEW

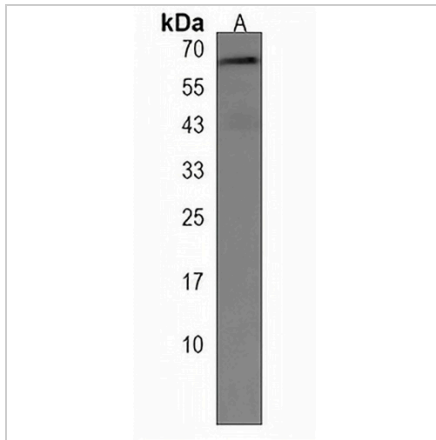
Description	Rabbit polyclonal antibody to LINGO4
Specificity	Recognizes endogenous levels of LINGO4 protein.
Antibody Type	Primary antibody
Immunogen	KLH-conjugated synthetic peptide encompassing a sequence within the C-terminal region of human LINGO4. The exact sequence is proprietary.
Purification	The antibody was purified by immunogen affinity chromatography.
Molecular Weight	Predicted: 63 kD; Observed: 64 kD
Form/Buffer	Liquid in 0.42% Potassium phosphate, 0.87% Sodium chloride, pH 7.3, 30% glycerol, and 0.01% sodium azide.
Alternative Names	LRRN6D; Leucine-rich repeat and immunoglobulin-like domain-containing nogo receptor-interacting protein 4; Leucine-rich repeat neuronal protein 6D
Gene Symbol	LINGO4
Entrez Gene	339398(Human); 320747(Mouse)
SwissProt	Q6UY18(Human); Q149C3(Mouse)

*AREX continuously optimizes our products. Webpage content may not reflect the latest updates. For inquiries, please contact info@arexbio.com or your local distributor.

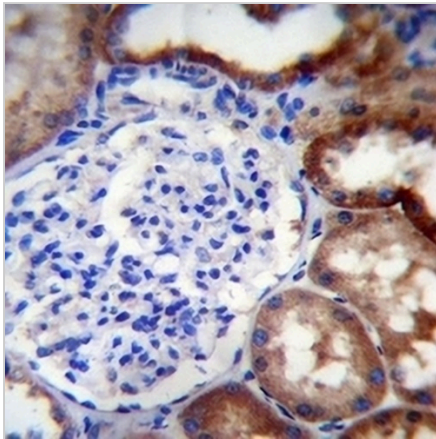
*Clone Number, Reactivity, Source/Host and Clonality can be found in the product name and Key Features section above.

DATASHEET**LINGO4 Rabbit Polyclonal Antibody**

CAT. NO. APA17872

DATA

Western blot analysis of LINGO4 expression in human liver (A) whole cell lysates.
(Predicted band size: 63 kD; Observed band size: 64 kD)



Immunohistochemical analysis of LINGO4 staining in human kidney formalin fixed paraffin embedded tissue section. The section was pre-treated using heat mediated antigen retrieval with sodium citrate buffer (pH 6.0). The section was then incubated with the antibody at room temperature and detected using an HRP conjugated compact polymer system. DAB was used as the chromogen. The section was then counterstained with haematoxylin and mounted with DPX.

STORAGE

Store at 4°C short term. For long term storage, store at -20°C, avoiding freeze/thaw cycles.

NOTE

For Research Use Only. Not for diagnostic, therapeutics, prophylactic or in vivo use.