

DATASHEET

SEL1L3 Rabbit Polyclonal Antibody

CAT. NO. APA17873

KEY FEATURES

Target	SEL1L3	Source / Host	Rabbit
Reactivity	Human	Clonality	Polyclonal
Applications	WB	Conjugation	Unconjugated
Form / Buffer	Liquid in 0.42% Potassium phosphate, 0.87% Sodium chloride, pH 7.3, 30% glycerol, and 0.01% sodium azide.		Storage at -20°C

BACKGROUND

Protein sel-1 homolog 3 (SEL1L3), also known as Suppressor of lin-12-like protein 3, Sel-1L3. Subcellular location: Membrane

APPLICATION

To ensure optimal assay performance, AREX recommends conducting reagent titration tailored to each testing system for optimal detection results.

WB	1:500 - 1:1000
----	----------------

*Results are sample-specific. Please refer to your local assay conditions and test parameters for reference.

PRODUCT OVERVIEW

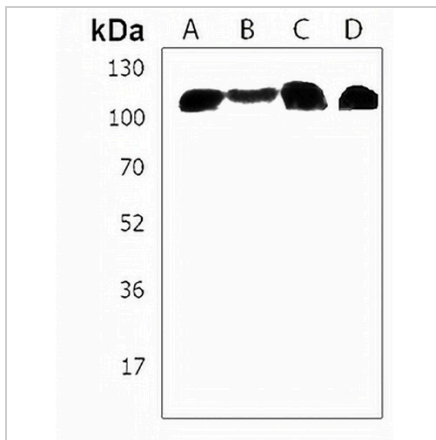
Description	Rabbit polyclonal antibody to SEL1L3
Specificity	Recognizes endogenous levels of SEL1L3 protein.
Antibody Type	Primary antibody
Immunogen	KLH-conjugated synthetic peptide encompassing a sequence within the N-terminal region of human SEL1L3. The exact sequence is proprietary.
Purification	The antibody was purified by immunogen affinity chromatography.
Molecular Weight	Predicted: 128 kD; Observed: 125 kD
Form/Buffer	Liquid in 0.42% Potassium phosphate, 0.87% Sodium chloride, pH 7.3, 30% glycerol, and 0.01% sodium azide.
Alternative Names	KIAA0746; Protein sel-1 homolog 3; Suppressor of lin-12-like protein 3; Sel-1L3
Gene Symbol	SEL1L3
Entrez Gene	23231(Human)
SwissProt	Q68CR1(Human)

*AREX continuously optimizes our products. Webpage content may not reflect the latest updates. For inquiries, please contact info@arexbio.com or your local distributor.

*Clone Number, Reactivity, Source/Host and Clonality can be found in the product name and Key Features section above.

DATASHEET**SEL1L3 Rabbit Polyclonal Antibody**

CAT. NO. APA17873

DATA

Western blot analysis of SEL1L3 expression in PC3 (A), U87MG (B), U2OS (C), U251MG (D) whole cell lysates. (Predicted band size: 128 kD; Observed band size: 125 kD)

STORAGE

Store at 4°C short term. For long term storage, store at -20°C, avoiding freeze/thaw cycles.

NOTE

For Research Use Only. Not for diagnostic, therapeutics, prophylactic or in vivo use.