

## DATASHEET

# MATN1 Rabbit Polyclonal Antibody

CAT. NO. APA17876

### KEY FEATURES

Target	MATN1	Source / Host	Rabbit
Reactivity	Human	Clonality	Polyclonal
Applications	WB, IHC	Conjugation	Unconjugated
Form / Buffer	Liquid in 0.42% Potassium phosphate, 0.87% Sodium chloride, pH 7.3, 30% glycerol, and 0.01% sodium azide.		Storage at -20°C

### BACKGROUND

A major component of the extracellular matrix of non-articular cartilage . Binds to type 2 collagens and forms long concatenated protein networks as part of the extracellular matrix . Required for the network-like organization and bundling of collagen fibrils surrounding chondrocytes in the zones of maturation and hypertrophy . Required for mechanotransduction and adaption to mechanical loading in cartilage chondrocytes, resulting in an increase in expression of the extracellular matrix components ACAN and COL2A1 . Acts as a moderator of angiogenesis in response to injury .

### APPLICATION

To ensure optimal assay performance, AREX recommends conducting reagent titration tailored to each testing system for optimal detection results.

WB	1:500 - 1:1000
IHC	1:50 - 1:200

\*Results are sample-specific. Please refer to your local assay conditions and test parameters for reference.

### PRODUCT OVERVIEW

Description	Rabbit polyclonal antibody to MATN1
Specificity	Recognizes endogenous levels of MATN1 protein.
Antibody Type	Primary antibody
Immunogen	KLH-conjugated synthetic peptide encompassing a sequence within the C-terminal region of human MATN1. The exact sequence is proprietary.
Purification	The antibody was purified by immunogen affinity chromatography.
Molecular Weight	Predicted: 53 kD; Observed: 57 kD
Form/Buffer	Liquid in 0.42% Potassium phosphate, 0.87% Sodium chloride, pH 7.3, 30% glycerol, and 0.01% sodium azide.
Alternative Names	CMP; CRTM; Cartilage matrix protein; Matrilin-1
Gene Symbol	MATN1
Entrez Gene	4146(Human)
SwissProt	P21941(Human)

\*AREX continuously optimizes our products. Webpage content may not reflect the latest updates. For inquiries, please contact [info@arexbio.com](mailto:info@arexbio.com) or your local distributor.

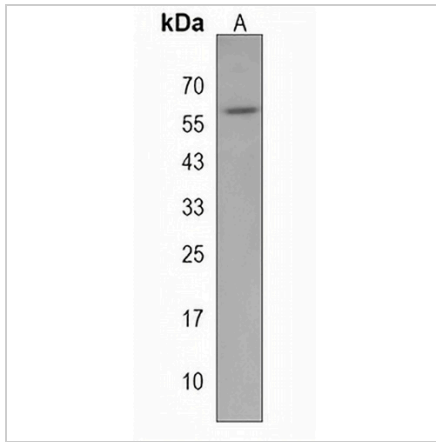
\*Clone Number, Reactivity, Source/Host and Clonality can be found in the product name and Key Features section above.

**DATASHEET**

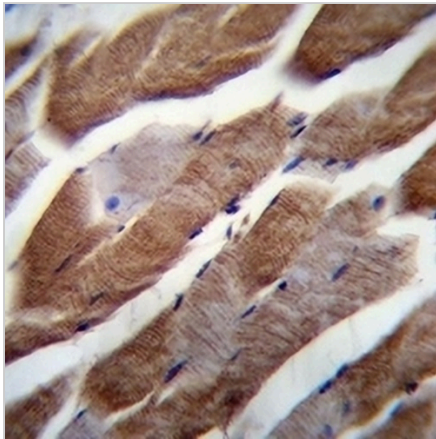
**MATN1 Rabbit Polyclonal Antibody**

CAT. NO. APA17876

**DATA**



Western blot analysis of MATN1 expression in NCIH292 (A) whole cell lysates. (Predicted band size: 53 kD; Observed band size: 57 kD)



Immunohistochemical analysis of MATN1 staining in human skeletal muscle formalin fixed paraffin embedded tissue section. The section was pre-treated using heat mediated antigen retrieval with sodium citrate buffer (pH 6.0). The section was then incubated with the antibody at room temperature and detected using an HRP conjugated compact polymer system. DAB was used as the chromogen. The section was then counterstained with haematoxylin and mounted with DPX.

**STORAGE**

Store at 4°C short term. For long term storage, store at -20°C, avoiding freeze/thaw cycles.

**NOTE**

For Research Use Only. Not for diagnostic, therapeutics, prophylactic or in vivo use.