

**DATASHEET**

**CHST8 Rabbit Polyclonal Antibody**

CAT. NO. APA17879

**KEY FEATURES**

Target	CHST8	Source / Host	Rabbit
Reactivity	Human	Clonality	Polyclonal
Applications	WB	Conjugation	Unconjugated
Form / Buffer	Liquid in 0.42% Potassium phosphate, 0.87% Sodium chloride, pH 7.3, 30% glycerol, and 0.01% sodium azide.		Storage at -20°C

**BACKGROUND**

Catalyzes the transfer of sulfate to position 4 of non-reducing N-acetylgalactosamine (GalNAc) residues in both N-glycans and O-glycans. Transfers sulfate to the 4-position of GalNAc in the context of GalNAcβ1-4GlcNAcβ1-6R attached to both N-linked and core 2 branched O-linked oligosaccharides. Required for biosynthesis of glycoprotein hormones lutropin and thyrotropin, by mediating sulfation of their carbohydrate structures residues in both N-glycans and O-glycans. Transfers sulfate to the 4-position of GalNAc in the context of GalNAcβ1-4GlcNAcβ1-6R attached to both N-linked and core 2 branched O-linked oligosaccharides. Required for biosynthesis of glycoprotein hormones lutropin and thyrotropin, by mediating sulfation of their carbohydrate structures .

**APPLICATION**

To ensure optimal assay performance, AREX recommends conducting reagent titration tailored to each testing system for optimal detection results.

WB	1:500 - 1:1000
----	----------------

\*Results are sample-specific. Please refer to your local assay conditions and test parameters for reference.

**PRODUCT OVERVIEW**

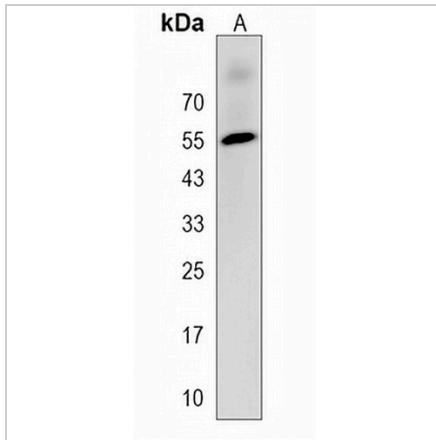
Description	Rabbit polyclonal antibody to CHST8
Specificity	Recognizes endogenous levels of CHST8 protein.
Antibody Type	Primary antibody
Immunogen	KLH-conjugated synthetic peptide encompassing a sequence within the Central region of human CHST8. The exact sequence is proprietary.
Purification	The antibody was purified by immunogen affinity chromatography.
Molecular Weight	Predicted: 48 kD; Observed: 55 kD
Form/Buffer	Liquid in 0.42% Potassium phosphate, 0.87% Sodium chloride, pH 7.3, 30% glycerol, and 0.01% sodium azide.
Alternative Names	Carbohydrate sulfotransferase 8; GalNAc-4-O-sulfotransferase 1; GalNAc-4-ST1; GalNAc4ST-1; N-acetylgalactosamine-4-O-sulfotransferase 1
Gene Symbol	CHST8
Entrez Gene	64377(Human)
SwissProt	Q9H2A9(Human)

\*AREX continuously optimizes our products. Webpage content may not reflect the latest updates. For inquiries, please contact [info@arexbio.com](mailto:info@arexbio.com) or your local distributor.

\*Clone Number, Reactivity, Source/Host and Clonality can be found in the product name and Key Features section above.

**DATASHEET****CHST8 Rabbit Polyclonal Antibody**

CAT. NO. APA17879

**DATA**

Western blot analysis of CHST8 expression in HepG2 (A) whole cell lysates. (Predicted band size: 48 kD; Observed band size: 55 kD)

**STORAGE**

Store at 4°C short term. For long term storage, store at -20°C, avoiding freeze/thaw cycles.

**NOTE**

For Research Use Only. Not for diagnostic, therapeutics, prophylactic or in vivo use.