

DATASHEET

YIPF1 Rabbit Polyclonal Antibody

CAT. NO. APA17884

KEY FEATURES

Target	YIPF1	Source / Host	Rabbit
Reactivity	Human	Clonality	Polyclonal
Applications	WB, IHC	Conjugation	Unconjugated
Form / Buffer	Liquid in 0.42% Potassium phosphate, 0.87% Sodium chloride, pH 7.3, 30% glycerol, and 0.01% sodium azide.		Storage at -20°C

BACKGROUND

Protein YIPF1 (YIPF1), also known as YIP1 family member 1. Belongs to the YIP1 family Subunit: Interacts with YIPF6; this interaction may stabilize YIPF1. May also form a ternary complex with YIPF2 and YIPF6 Subcellular location: Golgi apparatus, cis-Golgi network membrane; Golgi apparatus, trans-Golgi network membrane; Late endosome membrane

APPLICATION

To ensure optimal assay performance, AREX recommends conducting reagent titration tailored to each testing system for optimal detection results.

WB	1:500 - 1:1000
IHC	1:50 - 1:200

*Results are sample-specific. Please refer to your local assay conditions and test parameters for reference.

PRODUCT OVERVIEW

Description	Rabbit polyclonal antibody to YIPF1
Specificity	Recognizes endogenous levels of YIPF1 protein.
Antibody Type	Primary antibody
Immunogen	KLH-conjugated synthetic peptide encompassing a sequence within the N-terminal region of human YIPF1. The exact sequence is proprietary.
Purification	The antibody was purified by immunogen affinity chromatography.
Molecular Weight	Predicted: 34 kD; Observed: 41 kD
Form/Buffer	Liquid in 0.42% Potassium phosphate, 0.87% Sodium chloride, pH 7.3, 30% glycerol, and 0.01% sodium azide.
Alternative Names	Protein YIPF1; YIP1 family member 1
Gene Symbol	YIPF1
Entrez Gene	54432(Human)
SwissProt	Q9Y548(Human)

*AREX continuously optimizes our products. Webpage content may not reflect the latest updates. For inquiries, please contact info@arexbio.com or your local distributor.

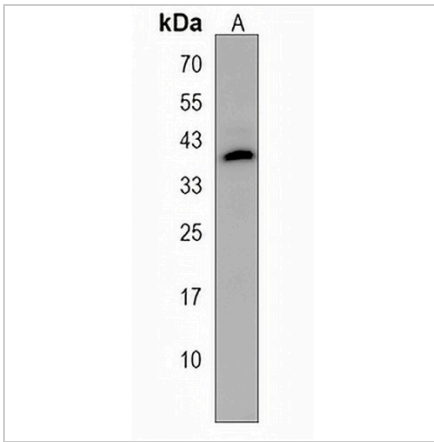
*Clone Number, Reactivity, Source/Host and Clonality can be found in the product name and Key Features section above.

DATASHEET

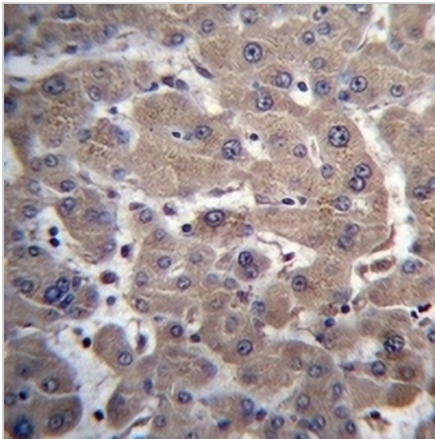
YIPF1 Rabbit Polyclonal Antibody

CAT. NO. APA17884

DATA



Western blot analysis of YIPF1 expression in ZR751 (A) whole cell lysates. (Predicted band size: 34 kD; Observed band size: 41 kD)



Immunohistochemical analysis of YIPF1 staining in human liver formalin fixed paraffin embedded tissue section. The section was pre-treated using heat mediated antigen retrieval with sodium citrate buffer (pH 6.0). The section was then incubated with the antibody at room temperature and detected using an HRP conjugated compact polymer system. DAB was used as the chromogen. The section was then counterstained with haematoxylin and mounted with DPX.

STORAGE

Store at 4°C short term. For long term storage, store at -20°C, avoiding freeze/thaw cycles.

NOTE

For Research Use Only. Not for diagnostic, therapeutics, prophylactic or in vivo use.