

**DATASHEET**

**CD353 Rabbit Polyclonal Antibody**

CAT. NO. APA17886

**KEY FEATURES**

Target	CD353	Source / Host	Rabbit
Reactivity	Human	Clonality	Polyclonal
Applications	WB	Conjugation	Unconjugated
Form / Buffer	Liquid in 0.42% Potassium phosphate, 0.87% Sodium chloride, pH 7.3, 30% glycerol, and 0.01% sodium azide.		Storage at -20°C

**BACKGROUND**

May play a role in B-lineage commitment and/or modulation of signaling through the B-cell receptor.

**APPLICATION**

To ensure optimal assay performance, AREX recommends conducting reagent titration tailored to each testing system for optimal detection results.

WB	1:500 - 1:1000
----	----------------

\*Results are sample-specific. Please refer to your local assay conditions and test parameters for reference.

**PRODUCT OVERVIEW**

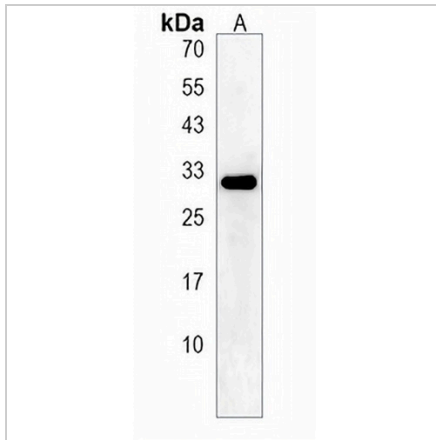
Description	Rabbit polyclonal antibody to CD353
Specificity	Recognizes endogenous levels of CD353 protein.
Antibody Type	Primary antibody
Immunogen	KLH-conjugated synthetic peptide encompassing a sequence within the C-terminal region of human CD353. The exact sequence is proprietary.
Purification	The antibody was purified by immunogen affinity chromatography.
Molecular Weight	Predicted: 31 kD; Observed: 31 kD
Form/Buffer	Liquid in 0.42% Potassium phosphate, 0.87% Sodium chloride, pH 7.3, 30% glycerol, and 0.01% sodium azide.
Alternative Names	BLAME; SLAM family member 8; B-lymphocyte activator macrophage expressed; BCM-like membrane protein; CD353
Gene Symbol	SLAMF8
Entrez Gene	56833(Human)
SwissProt	Q9P0V8(Human)

\*AREX continuously optimizes our products. Webpage content may not reflect the latest updates. For inquiries, please contact [info@arexbio.com](mailto:info@arexbio.com) or your local distributor.

\*Clone Number, Reactivity, Source/Host and Clonality can be found in the product name and Key Features section above.

**DATASHEET****CD353 Rabbit Polyclonal Antibody**

CAT. NO. APA17886

**DATA**

Western blot analysis of CD353 expression in MDAMB435 (A) whole cell lysates.  
(Predicted band size: 31 kD; Observed band size: 31 kD)

**STORAGE**

Store at 4°C short term. For long term storage, store at -20°C, avoiding freeze/thaw cycles.

**NOTE**

For Research Use Only. Not for diagnostic, therapeutics, prophylactic or in vivo use.