

DATASHEET

CCDC90B Rabbit Polyclonal Antibody

CAT. NO. APA17909

KEY FEATURES

Target	CCDC90B	Source / Host	Rabbit
Reactivity	Human	Clonality	Polyclonal
Applications	WB, IHC	Conjugation	Unconjugated
Form / Buffer	Liquid in 0.42% Potassium phosphate, 0.87% Sodium chloride, pH 7.3, 30% glycerol, and 0.01% sodium azide.		Storage at -20°C

BACKGROUND

Coiled-coil domain-containing protein 90B, mitochondrial (CCDC90B). Belongs to the CCDC90 family Subunit: Interacts with MCU . Belongs to the CCDC90 family Subunit: Interacts with MCU Subcellular location: Mitochondrion membrane

APPLICATION

To ensure optimal assay performance, AREX recommends conducting reagent titration tailored to each testing system for optimal detection results.

WB	1:500 - 1:1000
IHC	1:50 - 1:200

*Results are sample-specific. Please refer to your local assay conditions and test parameters for reference.

PRODUCT OVERVIEW

Description	Rabbit polyclonal antibody to CCDC90B
Specificity	Recognizes endogenous levels of CCDC90B protein.
Antibody Type	Primary antibody
Immunogen	KLH-conjugated synthetic peptide encompassing a sequence within the Central region of human CCDC90B. The exact sequence is proprietary.
Purification	The antibody was purified by immunogen affinity chromatography.
Molecular Weight	Predicted: 29 kD; Observed: 26 kD
Form/Buffer	Liquid in 0.42% Potassium phosphate, 0.87% Sodium chloride, pH 7.3, 30% glycerol, and 0.01% sodium azide.
Alternative Names	Coiled-coil domain-containing protein 90B, mitochondrial
Gene Symbol	CCDC90B
Entrez Gene	60492(Human)
SwissProt	Q9GZT6(Human)

*AREX continuously optimizes our products. Webpage content may not reflect the latest updates. For inquiries, please contact info@arexbio.com or your local distributor.

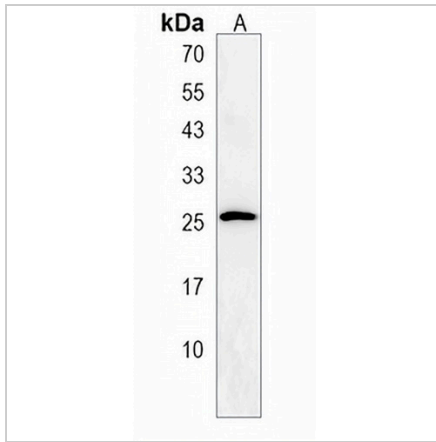
*Clone Number, Reactivity, Source/Host and Clonality can be found in the product name and Key Features section above.

DATASHEET

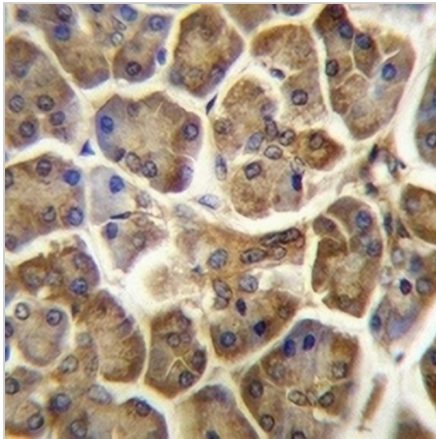
CCDC90B Rabbit Polyclonal Antibody

CAT. NO. APA17909

DATA



Western blot analysis of CCDC90B expression in human ovary (A) whole cell lysates. (Predicted band size: 29 kD; Observed band size: 26 kD)



Immunohistochemical analysis of CCDC90B staining in human pancreas formalin fixed paraffin embedded tissue section. The section was pre-treated using heat mediated antigen retrieval with sodium citrate buffer (pH 6.0). The section was then incubated with the antibody at room temperature and detected using an HRP conjugated compact polymer system. DAB was used as the chromogen. The section was then counterstained with haematoxylin and mounted with DPX.

STORAGE

Store at 4°C short term. For long term storage, store at -20°C, avoiding freeze/thaw cycles.

NOTE

For Research Use Only. Not for diagnostic, therapeutics, prophylactic or in vivo use.