

## DATASHEET

# PRLH Rabbit Polyclonal Antibody

CAT. NO. APA17925

### KEY FEATURES

Target	PRLH	Source / Host	Rabbit
Reactivity	Mouse	Clonality	Polyclonal
Applications	WB, IHC	Conjugation	Unconjugated
Form / Buffer	Liquid in 0.42% Potassium phosphate, 0.87% Sodium chloride, pH 7.3, 30% glycerol, and 0.01% sodium azide.		Storage at-20°C

### BACKGROUND

Predicted to enable neuropeptide hormone activity and prolactin-releasing peptide receptor binding activity. Predicted to be involved in G protein-coupled receptor signaling pathway; feeding behavior; and response to peptide hormone. Predicted to act upstream of or within several processes, including fat cell differentiation; reduction of food intake in response to dietary excess; and response to insulin. Predicted to be located in cytoplasm.

### APPLICATION

To ensure optimal assay performance, AREX recommends conducting reagent titration tailored to each testing system for optimal detection results.

WB	1:500 - 1:1000
IHC	1:50 - 1:200

\*Results are sample-specific. Please refer to your local assay conditions and test parameters for reference.

### PRODUCT OVERVIEW

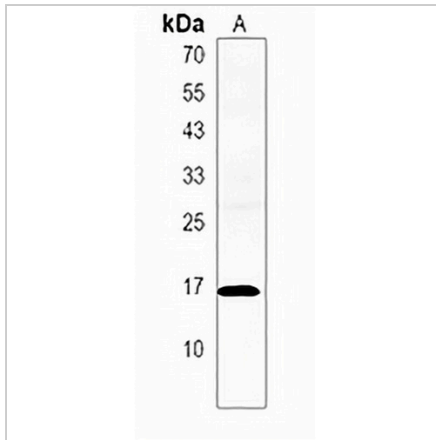
Description	Rabbit polyclonal antibody to PRLH
Specificity	Recognizes endogenous levels of PRLH protein.
Antibody Type	Primary antibody
Immunogen	KLH-conjugated synthetic peptide encompassing a sequence within the Central region of human PRLH. The exact sequence is proprietary.
Purification	The antibody was purified by immunogen affinity chromatography.
Molecular Weight	Predicted: 9 kD; Observed: 16 kD
Form/Buffer	Liquid in 0.42% Potassium phosphate, 0.87% Sodium chloride, pH 7.3, 30% glycerol, and 0.01% sodium azide.
Alternative Names	PRH; Prolactin-releasing peptide; PrRP; Prolactin-releasing hormone
Gene Symbol	PRLH
Entrez Gene	623503(Mouse)
SwissProt	G3UWC3(Mouse)

\*AREX continuously optimizes our products. Webpage content may not reflect the latest updates. For inquiries, please contact [info@arexbio.com](mailto:info@arexbio.com) or your local distributor.

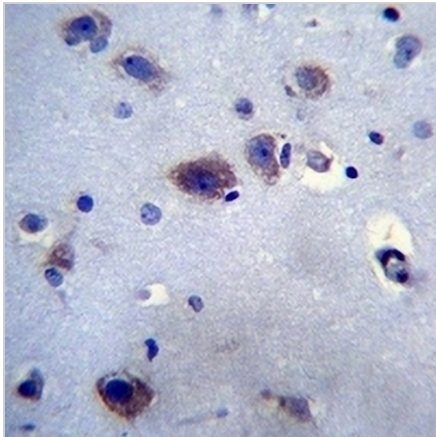
\*Clone Number, Reactivity, Source/Host and Clonality can be found in the product name and Key Features section above.

**DATASHEET****PRLH Rabbit Polyclonal Antibody**

CAT. NO. APA17925

**DATA**

Western blot analysis of PRLH expression in Neuro2a (A) whole cell lysates. (Predicted band size: 9 kD; Observed band size: 16 kD)



Immunohistochemical analysis of PRLH staining in human brain formalin fixed paraffin embedded tissue section. The section was pre-treated using heat mediated antigen retrieval with sodium citrate buffer (pH 6.0). The section was then incubated with the antibody at room temperature and detected using an HRP conjugated compact polymer system. DAB was used as the chromogen. The section was then counterstained with haematoxylin and mounted with DPX.

**STORAGE**

Store at 4°C short term. For long term storage, store at -20°C, avoiding freeze/thaw cycles.

**NOTE**

For Research Use Only. Not for diagnostic, therapeutics, prophylactic or in vivo use.