

DATASHEET

WBSCR17 Rabbit Polyclonal Antibody

CAT. NO. APA17927

KEY FEATURES

Target	WBSCR17	Source / Host	Rabbit
Reactivity	Mouse	Clonality	Polyclonal
Applications	WB	Conjugation	Unconjugated
Form / Buffer	Liquid in 0.42% Potassium phosphate, 0.87% Sodium chloride, pH 7.3, 30% glycerol, and 0.01% sodium azide.		Storage at-20°C

BACKGROUND

This gene encodes an N-acetylgalactosaminyltransferase. This gene is located centromeric to the common deleted region in Williams-Beuren syndrome (WBS), a multisystem developmental disorder caused by the deletion of contiguous genes at 7q11.23. This protein may play a role in membrane trafficking.

APPLICATION

To ensure optimal assay performance, AREX recommends conducting reagent titration tailored to each testing system for optimal detection results.

WB	1:500 - 1:1000
----	----------------

*Results are sample-specific. Please refer to your local assay conditions and test parameters for reference.

PRODUCT OVERVIEW

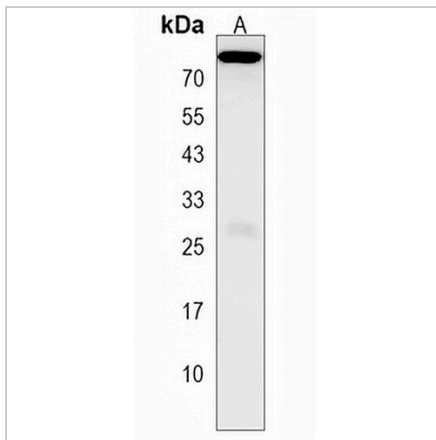
Description	Rabbit polyclonal antibody to WBSCR17
Specificity	Recognizes endogenous levels of WBSCR17 protein.
Antibody Type	Primary antibody
Immunogen	KLH-conjugated synthetic peptide encompassing a sequence within the C-terminal region of human WBSCR17. The exact sequence is proprietary.
Purification	The antibody was purified by immunogen affinity chromatography.
Molecular Weight	Predicted: 67 kD; Observed: 74 kD
Form/Buffer	Liquid in 0.42% Potassium phosphate, 0.87% Sodium chloride, pH 7.3, 30% glycerol, and 0.01% sodium azide.
Alternative Names	GALNTL3; Putative polypeptide N-acetylgalactosaminyltransferase-like protein 3; Polypeptide GalNAc transferase-like protein 3; GalNAc-T-like protein 3; pp-GaNTase-like protein 3; Protein-UDP acetylgalactosaminyltransferase-like protein 3; UDP-GalNAc:polypeptide N-acetylgalactosaminyltransferase-like protein 3; Williams-Beuren syndrome chromosomal region 17 protein
Gene Symbol	WBSCR17
Entrez Gene	212996(Mouse)
SwissProt	Q7TT15(Mouse)

*AREX continuously optimizes our products. Webpage content may not reflect the latest updates. For inquiries, please contact info@arexbio.com or your local distributor.

*Clone Number, Reactivity, Source/Host and Clonality can be found in the product name and Key Features section above.

DATASHEET**WBSCR17 Rabbit Polyclonal Antibody**

CAT. NO. APA17927

DATA

Western blot analysis of WBSCR17 expression in mouse stomach (A) whole cell lysates.
(Predicted band size: 67 kD; Observed band size: 74 kD)

STORAGE

Store at 4°C short term. For long term storage, store at -20°C, avoiding freeze/thaw cycles.

NOTE

For Research Use Only. Not for diagnostic, therapeutics, prophylactic or in vivo use.