

DATASHEET

PAPOLG Rabbit Polyclonal Antibody

CAT. NO. APA17934

KEY FEATURES

Target	PAPOLG	Source / Host	Rabbit
Reactivity	Human	Clonality	Polyclonal
Applications	WB	Conjugation	Unconjugated
Form / Buffer	Liquid in 0.42% Potassium phosphate, 0.87% Sodium chloride, pH 7.3, 30% glycerol, and 0.01% sodium azide.		Storage at -20°C

BACKGROUND

Responsible for the post-transcriptional adenylation of the 3'-terminal of mRNA precursors and several small RNAs including signal recognition particle (SRP) RNA, nuclear 75K RNA, U2 small nuclear RNA, and ribosomal 5S RNA.

APPLICATION

To ensure optimal assay performance, AREX recommends conducting reagent titration tailored to each testing system for optimal detection results.

WB	1:500 - 1:1000
----	----------------

*Results are sample-specific. Please refer to your local assay conditions and test parameters for reference.

PRODUCT OVERVIEW

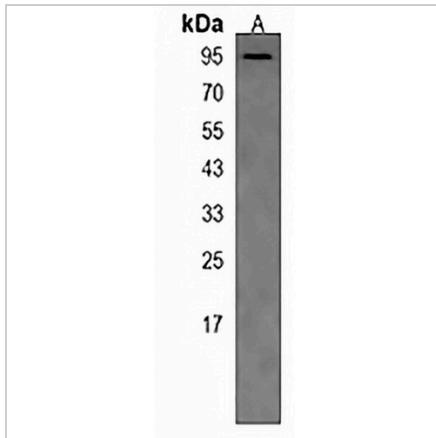
Description	Rabbit polyclonal antibody to PAPOLG
Specificity	Recognizes endogenous levels of PAPOLG protein.
Antibody Type	Primary antibody
Immunogen	KLH-conjugated synthetic peptide encompassing a sequence within the C-terminal region of human PAPOLG. The exact sequence is proprietary.
Purification	The antibody was purified by immunogen affinity chromatography.
Molecular Weight	Predicted: 82 kD; Observed: 95 kD
Form/Buffer	Liquid in 0.42% Potassium phosphate, 0.87% Sodium chloride, pH 7.3, 30% glycerol, and 0.01% sodium azide.
Alternative Names	PAP2; PAPG; Poly(A) polymerase gamma; PAP-gamma; Neo-poly(A) polymerase; Neo-PAP; Polynucleotide adenylyltransferase gamma; SRP RNA 3'-adenylating enzyme
Gene Symbol	PAPOLG
Entrez Gene	64895(Human)
SwissProt	Q9BWT3(Human)

*AREX continuously optimizes our products. Webpage content may not reflect the latest updates. For inquiries, please contact info@arexbio.com or your local distributor.

*Clone Number, Reactivity, Source/Host and Clonality can be found in the product name and Key Features section above.

DATASHEET**PAPOLG Rabbit Polyclonal Antibody**

CAT. NO. APA17934

DATA

Western blot analysis of PAPOLG expression in NCIH292 (A) whole cell lysates. (Predicted band size: 82 kD; Observed band size: 95 kD)

STORAGE

Store at 4°C short term. For long term storage, store at -20°C, avoiding freeze/thaw cycles.

NOTE

For Research Use Only. Not for diagnostic, therapeutics, prophylactic or in vivo use.