

DATASHEET

PALMD Rabbit Polyclonal Antibody

CAT. NO. APA17939

KEY FEATURES

Target	PALMD	Source / Host	Rabbit
Reactivity	Human	Clonality	Polyclonal
Applications	WB, IHC	Conjugation	Unconjugated
Form / Buffer	Liquid in 0.42% Potassium phosphate, 0.87% Sodium chloride, pH 7.3, 30% glycerol, and 0.01% sodium azide.		Storage at -20°C

BACKGROUND

Palmdelphin (PALMD), also known as Paralemmin-like protein. Belongs to the paralemmin family Subunit: Interacts with GLUL
Subcellular location: Cytoplasm; Cell projection, dendrite; Cell projection, dendritic spine Tissue specificity: Ubiquitous. Most abundant in cardiac and skeletal muscle PTM: Phosphorylated

APPLICATION

To ensure optimal assay performance, AREX recommends conducting reagent titration tailored to each testing system for optimal detection results.

WB	1:500 - 1:1000
IHC	1:50 - 1:200

*Results are sample-specific. Please refer to your local assay conditions and test parameters for reference.

PRODUCT OVERVIEW

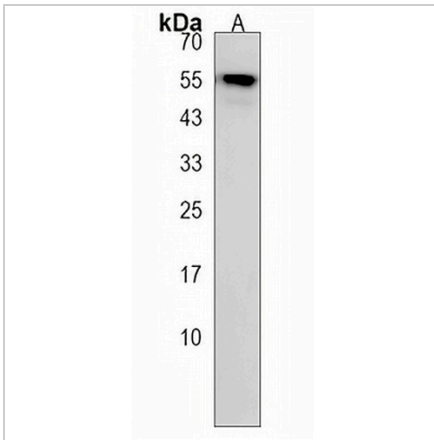
Description	Rabbit polyclonal antibody to PALMD
Specificity	Recognizes endogenous levels of PALMD protein.
Antibody Type	Primary antibody
Immunogen	KLH-conjugated synthetic peptide encompassing a sequence within the N-terminal region of human PALMD. The exact sequence is proprietary.
Purification	The antibody was purified by immunogen affinity chromatography.
Molecular Weight	Predicted: 62 kD; Observed: 55 kD
Form/Buffer	Liquid in 0.42% Potassium phosphate, 0.87% Sodium chloride, pH 7.3, 30% glycerol, and 0.01% sodium azide.
Alternative Names	C1orf11; PALML; Palmdelphin; Paralemmin-like protein
Gene Symbol	PALMD
Entrez Gene	54873(Human)
SwissProt	Q9NP74(Human)

*AREX continuously optimizes our products. Webpage content may not reflect the latest updates. For inquiries, please contact info@arexbio.com or your local distributor.

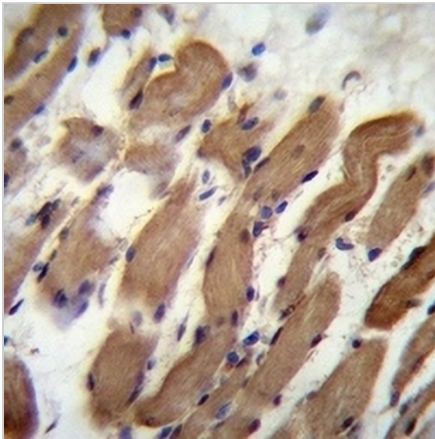
*Clone Number, Reactivity, Source/Host and Clonality can be found in the product name and Key Features section above.

DATASHEET**PALMD Rabbit Polyclonal Antibody**

CAT. NO. APA17939

DATA

Western blot analysis of PALMD expression in CEM (A) whole cell lysates. (Predicted band size: 62 kD; Observed band size: 55 kD)



Immunohistochemical analysis of PALMD staining in human skeletal muscle formalin fixed paraffin embedded tissue section. The section was pre-treated using heat mediated antigen retrieval with sodium citrate buffer (pH 6.0). The section was then incubated with the antibody at room temperature and detected using an HRP conjugated compact polymer system. DAB was used as the chromogen. The section was then counterstained with haematoxylin and mounted with DPX.

STORAGE

Store at 4°C short term. For long term storage, store at -20°C, avoiding freeze/thaw cycles.

NOTE

For Research Use Only. Not for diagnostic, therapeutics, prophylactic or in vivo use.