

DATASHEET

SGPP1 Rabbit Polyclonal Antibody

CAT. NO. APA17944

KEY FEATURES

| | | | |
|---------------|---|---------------|---------------------|
| Target | SGPP1 | Source / Host | Rabbit |
| Reactivity | Human | Clonality | Polyclonal |
| Applications | WB, IHC | Conjugation | Unconjugated |
| Form / Buffer | Liquid in 0.42% Potassium phosphate, 0.87% Sodium chloride, pH 7.3, 30% glycerol, and 0.01% sodium azide. | | Storage at -20°C |

BACKGROUND

Specifically dephosphorylates sphingosine 1-phosphate (S1P), dihydro-S1P, and phyto-S1P. Does not act on ceramide 1-phosphate, lysophosphatidic acid or phosphatidic acid, dihydro-S1P, and phyto-S1P. Does not act on ceramide 1-phosphate, lysophosphatidic acid or phosphatidic acid. Sphingosine-1-phosphate phosphatase activity is needed for efficient recycling of sphingosine into the sphingolipid synthesis pathway. Regulates the intracellular levels of the bioactive sphingolipid metabolite S1P that regulates diverse biological processes acting both as an extracellular receptor ligand or as an intracellular second messenger. Involved in efficient ceramide synthesis from exogenous sphingoid bases. Converts S1P to sphingosine, which is readily metabolized to ceramide via ceramide synthase.

APPLICATION

To ensure optimal assay performance, AREX recommends conducting reagent titration tailored to each testing system for optimal detection results.

| | |
|-----|----------------|
| WB | 1:500 - 1:1000 |
| IHC | 1:50 - 1:200 |

*Results are sample-specific. Please refer to your local assay conditions and test parameters for reference.

PRODUCT OVERVIEW

| | |
|-------------------|--|
| Description | Rabbit polyclonal antibody to SGPP1 |
| Specificity | Recognizes endogenous levels of SGPP1 protein. |
| Antibody Type | Primary antibody |
| Immunogen | KLH-conjugated synthetic peptide encompassing a sequence within the N-terminal region of human SGPP1. The exact sequence is proprietary. |
| Purification | The antibody was purified by immunogen affinity chromatography. |
| Molecular Weight | Predicted: 49 kD; Observed: 49 kD |
| Form/Buffer | Liquid in 0.42% Potassium phosphate, 0.87% Sodium chloride, pH 7.3, 30% glycerol, and 0.01% sodium azide. |
| Alternative Names | Sphingosine-1-phosphate phosphatase 1; SPPase1; Spp1; hSPP1; hSPPase1; Sphingosine-1-phosphatase 1 |
| Gene Symbol | SGPP1 |
| Entrez Gene | 81537(Human) |
| SwissProt | Q9BX95(Human) |

*AREX continuously optimizes our products. Webpage content may not reflect the latest updates. For inquiries, please contact info@arexbio.com or your local distributor.

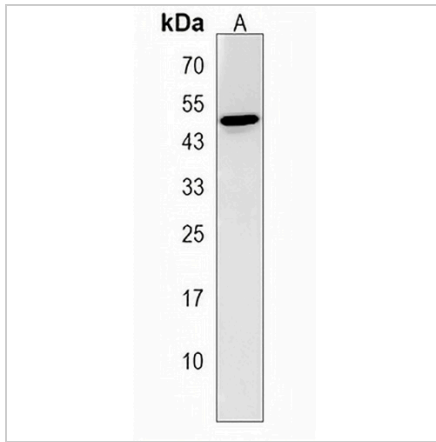
*Clone Number, Reactivity, Source/Host and Clonality can be found in the product name and Key Features section above.

DATASHEET

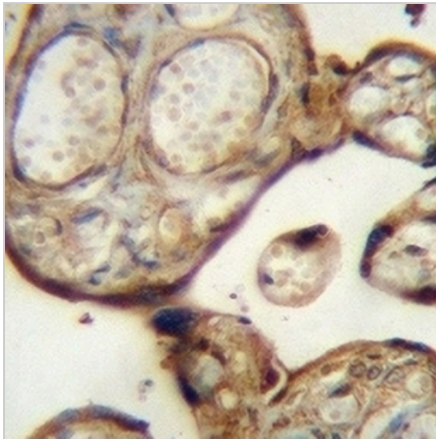
SGPP1 Rabbit Polyclonal Antibody

CAT. NO. APA17944

DATA



Western blot analysis of SGPP1 expression in human placenta (A) whole cell lysates. (Predicted band size: 49 kD; Observed band size: 49 kD)



Immunohistochemical analysis of SGPP1 staining in human placenta formalin fixed paraffin embedded tissue section. The section was pre-treated using heat mediated antigen retrieval with sodium citrate buffer (pH 6.0). The section was then incubated with the antibody at room temperature and detected using an HRP conjugated compact polymer system. DAB was used as the chromogen. The section was then counterstained with haematoxylin and mounted with DPX.

STORAGE

Store at 4°C short term. For long term storage, store at -20°C, avoiding freeze/thaw cycles.

NOTE

For Research Use Only. Not for diagnostic, therapeutics, prophylactic or in vivo use.