

DATASHEET

GPB5 Rabbit Polyclonal Antibody

CAT. NO. APA17945

KEY FEATURES

Target	GPB5	Source / Host	Rabbit
Reactivity	Human	Clonality	Polyclonal
Applications	WB, IHC	Conjugation	Unconjugated
Form / Buffer	Liquid in 0.42% Potassium phosphate, 0.87% Sodium chloride, pH 7.3, 30% glycerol, and 0.01% sodium azide.		Storage at -20°C

BACKGROUND

Functions as a heterodimeric glycoprotein hormone with GPHA2 able to bind and activate the thyroid-stimulating hormone receptor (TSHR), leading to increased cAMP production. Plays a central role in controlling thyroid cell metabolism.

APPLICATION

To ensure optimal assay performance, AREX recommends conducting reagent titration tailored to each testing system for optimal detection results.

WB	1:500 - 1:1000
IHC	1:50 - 1:200

*Results are sample-specific. Please refer to your local assay conditions and test parameters for reference.

PRODUCT OVERVIEW

Description	Rabbit polyclonal antibody to GPB5
Specificity	Recognizes endogenous levels of GPB5 protein.
Antibody Type	Primary antibody
Immunogen	KLH-conjugated synthetic peptide encompassing a sequence within the C-terminal region of human GPB5. The exact sequence is proprietary.
Purification	The antibody was purified by immunogen affinity chromatography.
Molecular Weight	Predicted: 14 kD; Observed: 17 kD
Form/Buffer	Liquid in 0.42% Potassium phosphate, 0.87% Sodium chloride, pH 7.3, 30% glycerol, and 0.01% sodium azide.
Alternative Names	GPB5; ZLUT1; Glycoprotein hormone beta-5; Thyrostimulin subunit beta
Gene Symbol	GPB5
Entrez Gene	122876(Human)
SwissProt	Q86YW7(Human)

*AREX continuously optimizes our products. Webpage content may not reflect the latest updates. For inquiries, please contact info@arexbio.com or your local distributor.

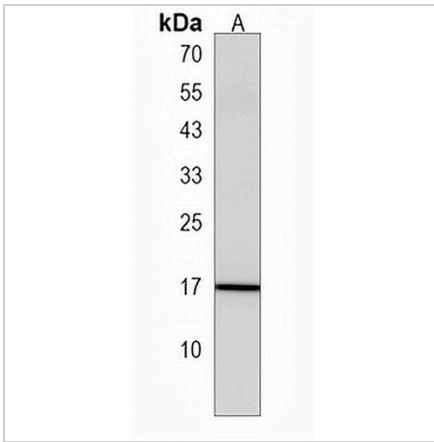
*Clone Number, Reactivity, Source/Host and Clonality can be found in the product name and Key Features section above.

DATASHEET

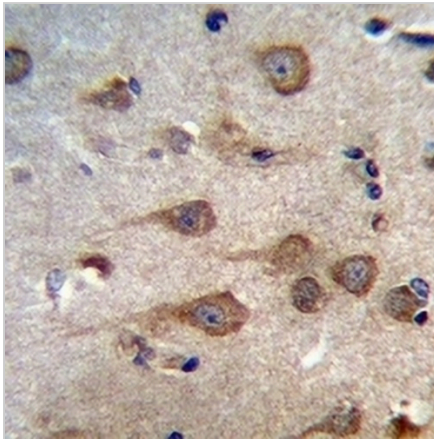
GPHB5 Rabbit Polyclonal Antibody

CAT. NO. APA17945

DATA



Western blot analysis of GPHB5 expression in human normal uterus (A) whole cell lysates. (Predicted band size: 14 kD; Observed band size: 17 kD)



Immunohistochemical analysis of GPHB5 staining in human brain formalin fixed paraffin embedded tissue section. The section was pre-treated using heat mediated antigen retrieval with sodium citrate buffer (pH 6.0). The section was then incubated with the antibody at room temperature and detected using an HRP conjugated compact polymer system. DAB was used as the chromogen. The section was then counterstained with haematoxylin and mounted with DPX.

STORAGE

Store at 4°C short term. For long term storage, store at -20°C, avoiding freeze/thaw cycles.

NOTE

For Research Use Only. Not for diagnostic, therapeutics, prophylactic or in vivo use.