

DATASHEET

CCDC134 Rabbit Polyclonal Antibody

CAT. NO. APA17947

KEY FEATURES

Target	CCDC134	Source / Host	Rabbit
Reactivity	Human	Clonality	Polyclonal
Applications	WB, IHC	Conjugation	Unconjugated
Form / Buffer	Liquid in 0.42% Potassium phosphate, 0.87% Sodium chloride, pH 7.3, 30% glycerol, and 0.01% sodium azide.		Storage at -20°C

BACKGROUND

Molecular adapter required to prevent protein hyperglycosylation of HSP90B1: during translation, associates with nascent HSP90B1 and the STT3A catalytic component of the OST-A complex and tethers them to a specialized translocon that forms a microenvironment for HSP90B1 folding . In the CCDC134-containing translocon, STT3A associates with the SRT pseudosubstrate motif of HSP90B1, preventing access to facultative glycosylation sites until folding is completed, preventing hyperglycosylation and subsequent degradation of HSP90B1 . In extracellular secreted form, promotes proliferation and activation of CD8(+) T-cells, suggesting a cytokine-like function . May inhibit ERK and JNK signaling activity . May suppress cell migration and invasion activity, via its effects on ERK and JNK signaling .

APPLICATION

To ensure optimal assay performance, AREX recommends conducting reagent titration tailored to each testing system for optimal detection results.

WB	1:500 - 1:1000
IHC	1:50 - 1:200

*Results are sample-specific. Please refer to your local assay conditions and test parameters for reference.

PRODUCT OVERVIEW

Description	Rabbit polyclonal antibody to CCDC134
Specificity	Recognizes endogenous levels of CCDC134 protein.
Antibody Type	Primary antibody
Immunogen	KLH-conjugated synthetic peptide encompassing a sequence within the C-terminal region of human CCDC134. The exact sequence is proprietary.
Purification	The antibody was purified by immunogen affinity chromatography.
Molecular Weight	Predicted: 26 kD; Observed: 28 kD
Form/Buffer	Liquid in 0.42% Potassium phosphate, 0.87% Sodium chloride, pH 7.3, 30% glycerol, and 0.01% sodium azide.
Alternative Names	Coiled-coil domain-containing protein 134
Gene Symbol	CCDC134
Entrez Gene	79879(Human)
SwissProt	Q9H6E4(Human)

*AREX continuously optimizes our products. Webpage content may not reflect the latest updates. For inquiries, please contact info@arexbio.com or your local distributor.

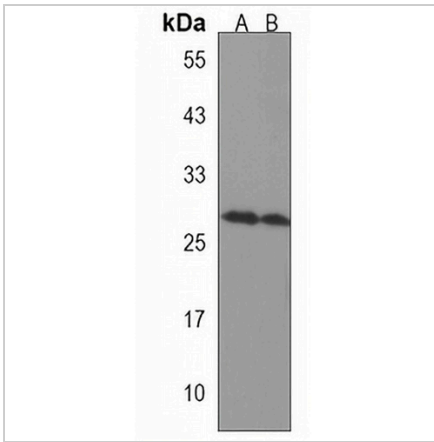
*Clone Number, Reactivity, Source/Host and Clonality can be found in the product name and Key Features section above.

DATASHEET

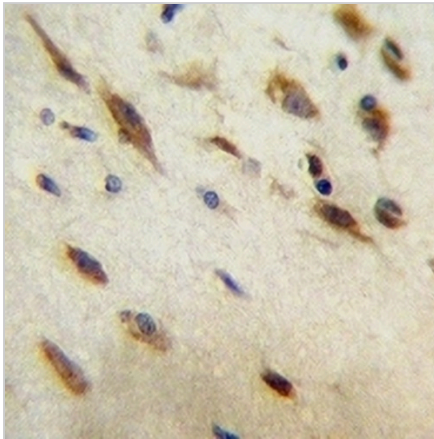
CCDC134 Rabbit Polyclonal Antibody

CAT. NO. APA17947

DATA



Western blot analysis of CCDC134 expression in HepG2 (A), CEM (B) whole cell lysates. (Predicted band size: 26 kD; Observed band size: 28 kD)



Immunohistochemical analysis of CCDC134 staining in human brain formalin fixed paraffin embedded tissue section. The section was pre-treated using heat mediated antigen retrieval with sodium citrate buffer (pH 6.0). The section was then incubated with the antibody at room temperature and detected using an HRP conjugated compact polymer system. DAB was used as the chromogen. The section was then counterstained with haematoxylin and mounted with DPX.

STORAGE

Store at 4°C short term. For long term storage, store at -20°C, avoiding freeze/thaw cycles.

NOTE

For Research Use Only. Not for diagnostic, therapeutics, prophylactic or in vivo use.