

**DATASHEET**

**GFRA4 Rabbit Polyclonal Antibody**

CAT. NO. APA17949

**KEY FEATURES**

Target	GFRA4	Source / Host	Rabbit
Reactivity	Human	Clonality	Polyclonal
Applications	WB	Conjugation	Unconjugated
Form / Buffer	Liquid in 0.42% Potassium phosphate, 0.87% Sodium chloride, pH 7.3, 30% glycerol, and 0.01% sodium azide.		Storage at-20°C

**BACKGROUND**

Receptor for persephin (PSPN), a growth factor that exhibits neurotrophic activity on mesencephalic dopaminergic and motor neurons , a growth factor that exhibits neurotrophic activity on mesencephalic dopaminergic and motor neurons . Acts by binding to its coreceptor, GFRA4, leading to autophosphorylation and activation of the RET receptor . May be important in C-cell development and, in the postnatal development of the adrenal medulla .

**APPLICATION**

To ensure optimal assay performance, AREX recommends conducting reagent titration tailored to each testing system for optimal detection results.

WB	1:500 - 1:1000
----	----------------

\*Results are sample-specific. Please refer to your local assay conditions and test parameters for reference.

**PRODUCT OVERVIEW**

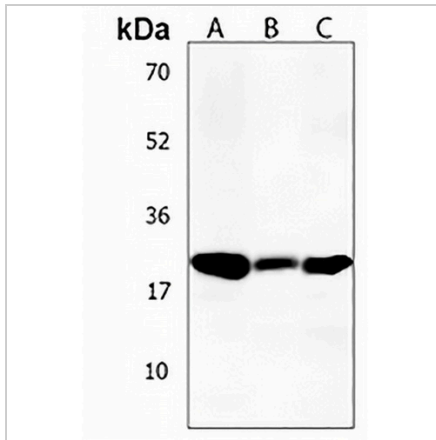
Description	Rabbit polyclonal antibody to GFRA4
Specificity	Recognizes endogenous levels of GFRA4 protein.
Antibody Type	Primary antibody
Immunogen	KLH-conjugated synthetic peptide encompassing a sequence within the Central region of human GFRA4. The exact sequence is proprietary.
Purification	The antibody was purified by immunogen affinity chromatography.
Molecular Weight	Predicted: 31 kD; Observed: 26 kD
Form/Buffer	Liquid in 0.42% Potassium phosphate, 0.87% Sodium chloride, pH 7.3, 30% glycerol, and 0.01% sodium azide.
Alternative Names	GDNF family receptor alpha-4; GDNF receptor alpha-4; GDNFR-alpha-4; GFR-alpha-4; Persephin receptor
Gene Symbol	GFRA4
Entrez Gene	64096(Human)
SwissProt	Q9GZZ7(Human)

\*AREX continuously optimizes our products. Webpage content may not reflect the latest updates. For inquiries, please contact [info@arexbio.com](mailto:info@arexbio.com) or your local distributor.

\*Clone Number, Reactivity, Source/Host and Clonality can be found in the product name and Key Features section above.

**DATASHEET****GFRA4 Rabbit Polyclonal Antibody**

CAT. NO. APA17949

**DATA**

Western blot analysis of GFRA4 expression in HL60 (A), ZR751 (B), MDAMB453 (C) whole cell lysates. (Predicted band size: 31 kD; Observed band size: 26 kD)

**STORAGE**

Store at 4°C short term. For long term storage, store at -20°C, avoiding freeze/thaw cycles.

**NOTE**

For Research Use Only. Not for diagnostic, therapeutics, prophylactic or in vivo use.