

DATASHEET

YAE1D1 Rabbit Polyclonal Antibody

CAT. NO. APA17961

KEY FEATURES

Target	YAE1D1	Source / Host	Rabbit
Reactivity	Human	Clonality	Polyclonal
Applications	WB, IHC	Conjugation	Unconjugated
Form / Buffer	Liquid in 0.42% Potassium phosphate, 0.87% Sodium chloride, pH 7.3, 30% glycerol, and 0.01% sodium azide.		Storage at -20°C

BACKGROUND

The complex LTO1:YAE1 functions as a target specific adapter that probably recruits apo-ABCE1 to the cytosolic iron-sulfur protein assembly (CIA) complex machinery complex machinery . May be required for biogenesis of the large ribosomal subunit and initiation of translation .

APPLICATION

To ensure optimal assay performance, AREX recommends conducting reagent titration tailored to each testing system for optimal detection results.

WB	1:500 - 1:1000
IHC	1:50 - 1:200

*Results are sample-specific. Please refer to your local assay conditions and test parameters for reference.

PRODUCT OVERVIEW

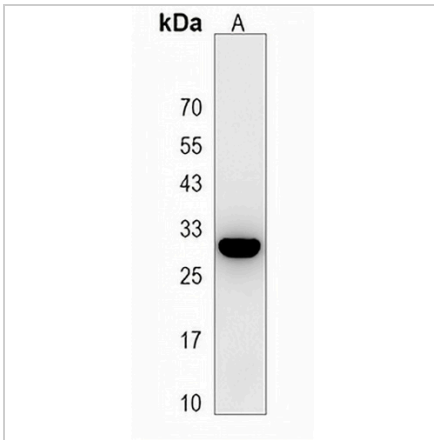
Description	Rabbit polyclonal antibody to YAE1D1
Specificity	Recognizes endogenous levels of YAE1D1 protein.
Antibody Type	Primary antibody
Immunogen	KLH-conjugated synthetic peptide encompassing a sequence within the Central region of human YAE1D1. The exact sequence is proprietary.
Purification	The antibody was purified by immunogen affinity chromatography.
Molecular Weight	Predicted: 25 kD; Observed: 31 kD
Form/Buffer	Liquid in 0.42% Potassium phosphate, 0.87% Sodium chloride, pH 7.3, 30% glycerol, and 0.01% sodium azide.
Alternative Names	C7orf36; Yae1 domain-containing protein 1
Gene Symbol	YAE1D1
Entrez Gene	57002(Human)
SwissProt	Q9NRH1(Human)

*AREX continuously optimizes our products. Webpage content may not reflect the latest updates. For inquiries, please contact info@arexbio.com or your local distributor.

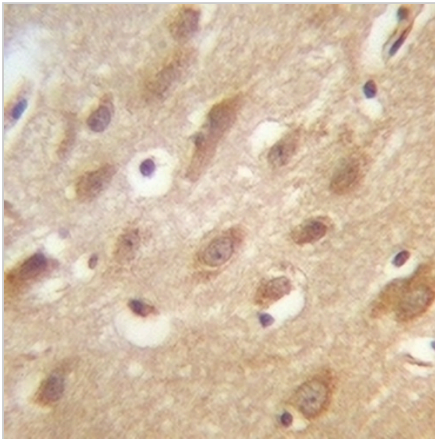
*Clone Number, Reactivity, Source/Host and Clonality can be found in the product name and Key Features section above.

DATASHEET**YAE1D1 Rabbit Polyclonal Antibody**

CAT. NO. APA17961

DATA

Western blot analysis of YAE1D1 expression in HepG2 (A) whole cell lysates. (Predicted band size: 25 kD; Observed band size: 31 kD)



Immunohistochemical analysis of YAE1D1 staining in human brain formalin fixed paraffin embedded tissue section. The section was pre-treated using heat mediated antigen retrieval with sodium citrate buffer (pH 6.0). The section was then incubated with the antibody at room temperature and detected using an HRP conjugated compact polymer system. DAB was used as the chromogen. The section was then counterstained with haematoxylin and mounted with DPX.

STORAGE

Store at 4°C short term. For long term storage, store at -20°C, avoiding freeze/thaw cycles.

NOTE

For Research Use Only. Not for diagnostic, therapeutics, prophylactic or in vivo use.