

DATASHEET

WSCD2 Rabbit Polyclonal Antibody

CAT. NO. APA17966

KEY FEATURES

Target	WSCD2	Source / Host	Rabbit
Reactivity	Human	Clonality	Polyclonal
Applications	WB	Conjugation	Unconjugated
Form / Buffer	Liquid in 0.42% Potassium phosphate, 0.87% Sodium chloride, pH 7.3, 30% glycerol, and 0.01% sodium azide.		Storage at -20°C

BACKGROUND

Sialate:O-sulfotransferase which catalyzes 8-O-sulfation at the Sia-glycan level using 3'-phosphoadenosine 5'-phosphosulfate (PAPS) as a donor, forming 8-O-sulfated Sia (Sia8S)-glycans. Displays selectivity toward glycoproteins such as TF/transferrin.

APPLICATION

To ensure optimal assay performance, AREX recommends conducting reagent titration tailored to each testing system for optimal detection results.

WB	1:500 - 1:1000
----	----------------

*Results are sample-specific. Please refer to your local assay conditions and test parameters for reference.

PRODUCT OVERVIEW

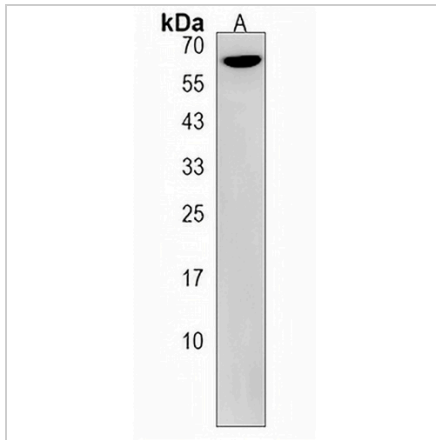
Description	Rabbit polyclonal antibody to WSCD2
Specificity	Recognizes endogenous levels of WSCD2 protein.
Antibody Type	Primary antibody
Immunogen	KLH-conjugated synthetic peptide encompassing a sequence within the C-terminal region of human WSCD2. The exact sequence is proprietary.
Purification	The antibody was purified by immunogen affinity chromatography.
Molecular Weight	Predicted: 63 kD; Observed: 67 kD
Form/Buffer	Liquid in 0.42% Potassium phosphate, 0.87% Sodium chloride, pH 7.3, 30% glycerol, and 0.01% sodium azide.
Alternative Names	KIAA0789; WSC domain-containing protein 2
Gene Symbol	WSCD2
Entrez Gene	9671(Human)
SwissProt	Q2TBF2(Human)

*AREX continuously optimizes our products. Webpage content may not reflect the latest updates. For inquiries, please contact info@arexbio.com or your local distributor.

*Clone Number, Reactivity, Source/Host and Clonality can be found in the product name and Key Features section above.

DATASHEET**WSCD2 Rabbit Polyclonal Antibody**

CAT. NO. APA17966

DATA

Western blot analysis of WSCD2 expression in A549 (A) whole cell lysates. (Predicted band size: 63 kD; Observed band size: 67 kD)

STORAGE

Store at 4°C short term. For long term storage, store at -20°C, avoiding freeze/thaw cycles.

NOTE

For Research Use Only. Not for diagnostic, therapeutics, prophylactic or in vivo use.