

DATASHEET

ENDOU Rabbit Polyclonal Antibody

CAT. NO. APA17973

KEY FEATURES

Target	ENDOU	Source / Host	Rabbit
Reactivity	Human	Clonality	Polyclonal
Applications	WB	Conjugation	Unconjugated
Form / Buffer	Liquid in 0.42% Potassium phosphate, 0.87% Sodium chloride, pH 7.3, 30% glycerol, and 0.01% sodium azide.		Storage at -20°C

BACKGROUND

Endoribonuclease that cleaves single-stranded RNAs at 5' of uridylates and releases a product with a 2',3'-cyclic phosphate at the 3'-end. The UU and GU sites are more efficiently cleaved than CU and AU sites. Targets mRNAs to regulate their expression.

APPLICATION

To ensure optimal assay performance, AREX recommends conducting reagent titration tailored to each testing system for optimal detection results.

WB	1:500 - 1:1000
----	----------------

*Results are sample-specific. Please refer to your local assay conditions and test parameters for reference.

PRODUCT OVERVIEW

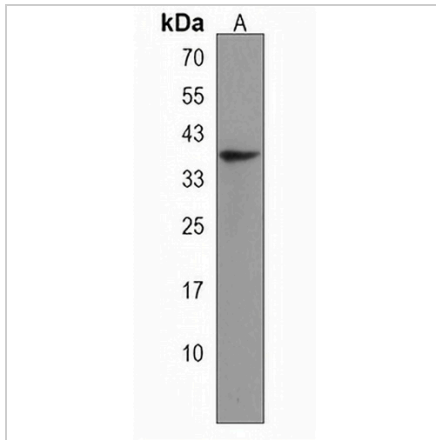
Description	Rabbit polyclonal antibody to ENDOU
Specificity	Recognizes endogenous levels of ENDOU protein.
Antibody Type	Primary antibody
Immunogen	KLH-conjugated synthetic peptide encompassing a sequence within the N-terminal region of human ENDOU. The exact sequence is proprietary.
Purification	The antibody was purified by immunogen affinity chromatography.
Molecular Weight	Predicted: 46 kD; Observed: 38 kD
Form/Buffer	Liquid in 0.42% Potassium phosphate, 0.87% Sodium chloride, pH 7.3, 30% glycerol, and 0.01% sodium azide.
Alternative Names	Poly(U)-specific endoribonuclease; Placental protein 11; PP11; Protein endoU; Uridylate-specific endoribonuclease
Gene Symbol	ENDOU
Entrez Gene	8909(Human)
SwissProt	P21128(Human)

*AREX continuously optimizes our products. Webpage content may not reflect the latest updates. For inquiries, please contact info@arexbio.com or your local distributor.

*Clone Number, Reactivity, Source/Host and Clonality can be found in the product name and Key Features section above.

DATASHEET**ENDOU Rabbit Polyclonal Antibody**

CAT. NO. APA17973

DATA

Western blot analysis of ENDOU expression in human placenta (A) whole cell lysates.
(Predicted band size: 46 kD; Observed band size: 38 kD)

STORAGE

Store at 4°C short term. For long term storage, store at -20°C, avoiding freeze/thaw cycles.

NOTE

For Research Use Only. Not for diagnostic, therapeutics, prophylactic or in vivo use.