

**DATASHEET**

**ARMC9 Rabbit Polyclonal Antibody**

CAT. NO. APA17976

**KEY FEATURES**

Target	ARMC9	Source / Host	Rabbit
Reactivity	Human	Clonality	Polyclonal
Applications	WB, IHC	Conjugation	Unconjugated
Form / Buffer	Liquid in 0.42% Potassium phosphate, 0.87% Sodium chloride, pH 7.3, 30% glycerol, and 0.01% sodium azide.		Storage at -20°C

**BACKGROUND**

Involved in ciliogenesis . It is required for appropriate acetylation and polyglutamylation of ciliary microtubules, and regulation of cilium length . Acts as a positive regulator of hedgehog (Hh)signaling . May participate in the trafficking and/or retention of GLI2 and GLI3 proteins at the ciliary tip .

**APPLICATION**

To ensure optimal assay performance, AREX recommends conducting reagent titration tailored to each testing system for optimal detection results.

WB	1:500 - 1:1000
IHC	1:50 - 1:200

\*Results are sample-specific. Please refer to your local assay conditions and test parameters for reference.

**PRODUCT OVERVIEW**

Description	Rabbit polyclonal antibody to ARMC9
Specificity	Recognizes endogenous levels of ARMC9 protein.
Antibody Type	Primary antibody
Immunogen	KLH-conjugated synthetic peptide encompassing a sequence within the N-terminal region of human ARMC9. The exact sequence is proprietary.
Purification	The antibody was purified by immunogen affinity chromatography.
Molecular Weight	Predicted: 91 kD; Observed: 94 kD
Form/Buffer	Liquid in 0.42% Potassium phosphate, 0.87% Sodium chloride, pH 7.3, 30% glycerol, and 0.01% sodium azide.
Alternative Names	KIAA1868; LisH domain-containing protein ARMC9; Melanoma/melanocyte-specific tumor antigen KUMEL-1; NS21
Gene Symbol	ARMC9
Entrez Gene	80210(Human)
SwissProt	Q7Z3E5(Human)

\*AREX continuously optimizes our products. Webpage content may not reflect the latest updates. For inquiries, please contact [info@arexbio.com](mailto:info@arexbio.com) or your local distributor.

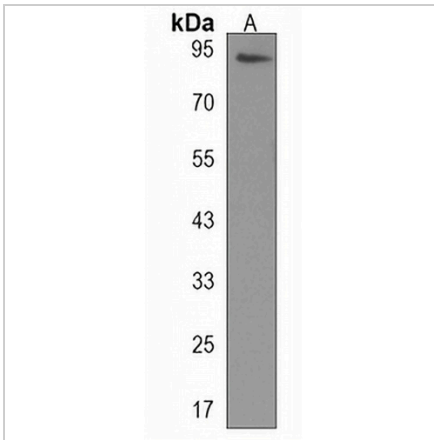
\*Clone Number, Reactivity, Source/Host and Clonality can be found in the product name and Key Features section above.

**DATASHEET**

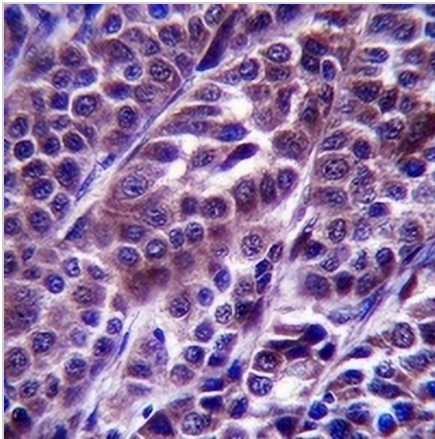
**ARMC9 Rabbit Polyclonal Antibody**

CAT. NO. APA17976

**DATA**



Western blot analysis of ARMC9 expression in CEM (A) whole cell lysates. (Predicted band size: 91 kD; Observed band size: 94 kD)



Immunohistochemical analysis of ARMC9 staining in human melanoma formalin fixed paraffin embedded tissue section. The section was pre-treated using heat mediated antigen retrieval with sodium citrate buffer (pH 6.0). The section was then incubated with the antibody at room temperature and detected using an HRP conjugated compact polymer system. DAB was used as the chromogen. The section was then counterstained with haematoxylin and mounted with DPX.

**STORAGE**

Store at 4°C short term. For long term storage, store at -20°C, avoiding freeze/thaw cycles.

**NOTE**

For Research Use Only. Not for diagnostic, therapeutics, prophylactic or in vivo use.