

**DATASHEET**

**Selenoprotein K Rabbit Polyclonal Antibody**

CAT. NO. APA17999

**KEY FEATURES**

Target	Selenoprotein K	Source / Host	Rabbit
Reactivity	Human, Mouse	Clonality	Polyclonal
Applications	WB	Conjugation	Unconjugated
Form / Buffer	Liquid in 0.42% Potassium phosphate, 0.87% Sodium chloride, pH 7.3, 30% glycerol, and 0.01% sodium azide.		Storage at -20°C

**BACKGROUND**

Required for Ca(2+) flux in immune cells and plays a role in T-cell proliferation and in T-cell and neutrophil migration . Involved in endoplasmic reticulum-associated degradation (ERAD) of soluble glycosylated proteins flux in immune cells and plays a role in T-cell proliferation and in T-cell and neutrophil migration . Involved in endoplasmic reticulum-associated degradation (ERAD) of soluble glycosylated proteins . Required for palmitoylation and cell surface expression of CD36 and involved in macrophage uptake of low-density lipoprotein and in foam cell formation . Together with ZDHHC6, required for palmitoylation of ITPR1 in immune cells, leading to regulate ITPR1 stability and function . Plays a role in protection of cells from ER stress-induced apoptosis .

**APPLICATION**

To ensure optimal assay performance, AREX recommends conducting reagent titration tailored to each testing system for optimal detection results.

WB	1:500 - 1:1000
----	----------------

\*Results are sample-specific. Please refer to your local assay conditions and test parameters for reference.

**PRODUCT OVERVIEW**

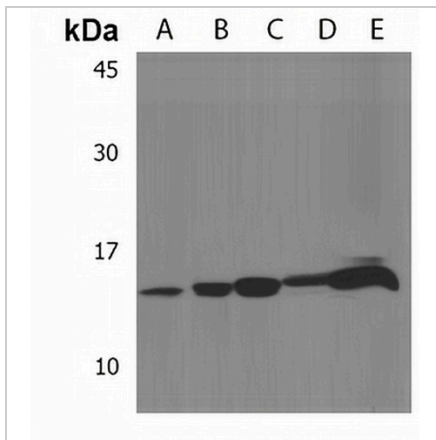
Description	Rabbit polyclonal antibody to Selenoprotein K
Specificity	Recognizes endogenous levels of Selenoprotein K protein.
Antibody Type	Primary antibody
Immunogen	KLH-conjugated synthetic peptide encompassing a sequence within the Central region of human Selenoprotein K. The exact sequence is proprietary.
Purification	The antibody was purified by immunogen affinity chromatography.
Molecular Weight	Predicted: 10 kD; Observed: 15 kD
Form/Buffer	Liquid in 0.42% Potassium phosphate, 0.87% Sodium chloride, pH 7.3, 30% glycerol, and 0.01% sodium azide.
Alternative Names	Selenoprotein K; SelK
Gene Symbol	SELK
Entrez Gene	58515(Human); 80795(Mouse)
SwissProt	Q9Y6D0(Human); Q9JLJ1(Mouse)

\*AREX continuously optimizes our products. Webpage content may not reflect the latest updates. For inquiries, please contact [info@arexbio.com](mailto:info@arexbio.com) or your local distributor.

\*Clone Number, Reactivity, Source/Host and Clonality can be found in the product name and Key Features section above.

**DATASHEET****Selenoprotein K Rabbit Polyclonal Antibody**

CAT. NO. APA17999

**DATA**

Western blot analysis of Selenoprotein K expression in HepG2 (A), U251MG (B), PC3 (C), NIH3T3 (D), A20 (E) whole cell lysates. (Predicted band size: 10 kD; Observed band size: 15 kD)

**STORAGE**

Store at 4°C short term. For long term storage, store at -20°C, avoiding freeze/thaw cycles.

**NOTE**

For Research Use Only. Not for diagnostic, therapeutics, prophylactic or in vivo use.