

DATASHEET

SIDT2 Rabbit Polyclonal Antibody

CAT. NO. APA18000

KEY FEATURES

Target	SIDT2	Source / Host	Rabbit
Reactivity	Human, Mouse	Clonality	Polyclonal
Applications	WB	Conjugation	Unconjugated
Form / Buffer	Liquid in 0.42% Potassium phosphate, 0.87% Sodium chloride, pH 7.3, 30% glycerol, and 0.01% sodium azide.		Storage at -20°C

BACKGROUND

Mediates the translocation of RNA and DNA across the lysosomal membrane during RNA and DNA autophagy (RDA), a process in which RNA or DNA is directly imported into lysosomes in an ATP-dependent manner, and degraded, a process in which RNA or DNA is directly imported into lysosomes in an ATP-dependent manner, and degraded. Involved in the uptake of single-stranded oligonucleotides by living cells, a process called gymnosis. In vitro, mediates the uptake of linear DNA more efficiently than that of circular DNA, but exhibits similar uptake efficacy toward RNA and DNA. Binds long double-stranded RNA (dsRNA) (500 - 700 base pairs), but not dsRNA shorter than 100 bp.

APPLICATION

To ensure optimal assay performance, AREX recommends conducting reagent titration tailored to each testing system for optimal detection results.

WB	1:500 - 1:1000
----	----------------

*Results are sample-specific. Please refer to your local assay conditions and test parameters for reference.

PRODUCT OVERVIEW

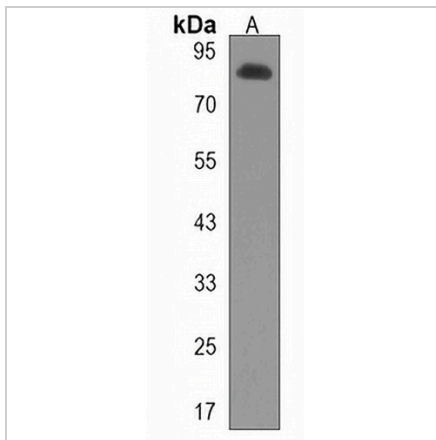
Description	Rabbit polyclonal antibody to SIDT2
Specificity	Recognizes endogenous levels of SIDT2 protein.
Antibody Type	Primary antibody
Immunogen	KLH-conjugated synthetic peptide encompassing a sequence within the Central region of human SIDT2. The exact sequence is proprietary.
Purification	The antibody was purified by immunogen affinity chromatography.
Molecular Weight	Predicted: 94 kD; Observed: 88 kD
Form/Buffer	Liquid in 0.42% Potassium phosphate, 0.87% Sodium chloride, pH 7.3, 30% glycerol, and 0.01% sodium azide.
Alternative Names	SID1 transmembrane family member 2
Gene Symbol	SIDT2
Entrez Gene	51092(Human); 214597(Mouse)
SwissProt	Q8NBJ9(Human); Q8CIF6(Mouse)

*AREX continuously optimizes our products. Webpage content may not reflect the latest updates. For inquiries, please contact info@arexbio.com or your local distributor.

*Clone Number, Reactivity, Source/Host and Clonality can be found in the product name and Key Features section above.

DATASHEET**SIDT2 Rabbit Polyclonal Antibody**

CAT. NO. APA18000

DATA

Western blot analysis of SIDT2 expression in human placenta (A) whole cell lysates.
(Predicted band size: 94 kD; Observed band size: 88 kD)

STORAGE

Store at 4°C short term. For long term storage, store at -20°C, avoiding freeze/thaw cycles.

NOTE

For Research Use Only. Not for diagnostic, therapeutics, prophylactic or in vivo use.