

DATASHEET
ASPG Rabbit Polyclonal Antibody
CAT. NO. APA18006
KEY FEATURES

Target	ASPG	Source / Host	Rabbit
Reactivity	Human	Clonality	Polyclonal
Applications	WB	Conjugation	Unconjugated
Form / Buffer	Liquid in 0.42% Potassium phosphate, 0.87% Sodium chloride, pH 7.3, 30% glycerol, and 0.01% sodium azide.		Storage at -20°C

BACKGROUND

Exhibits lysophospholipase, transacylase, PAF acetylhydrolase and asparaginase activities . Can catalyze three types of transacylation reactions: (1) acyl transfer from 1-acyl-sn-glycero-3-phosphocholine (1-acyl-GPC) to the sn-1(3) positions of glycerol and 2-acylglycerol (sn-1 to -1(3) transfer), (2) acyl transfer from 1-acyl-GPC to the sn-2 positions of 1-acyl-GPC, 1-acyl-sn-glycero-3-phosphoethanolamine (1-acyl-GPE), and other lysophospholipids (sn-1 to -2 transfer) and (3) acyl transfer from 2-acyl-GPC to the sn-1 position of 2-acyl-GPC and 2-acyl-GPE (sn-2 to -1 transfer) . Mediates the synthesis of 1-arachidonoyl species of phospholipids by transferring the arachidonoyl residue from 2-arachidonoyl lysophospholipid to the sn-1 position of 2-acyl lysophospholipid .

APPLICATION

To ensure optimal assay performance, AREX recommends conducting reagent titration tailored to each testing system for optimal detection results.

WB	1:500 - 1:1000
----	----------------

*Results are sample-specific. Please refer to your local assay conditions and test parameters for reference.

PRODUCT OVERVIEW

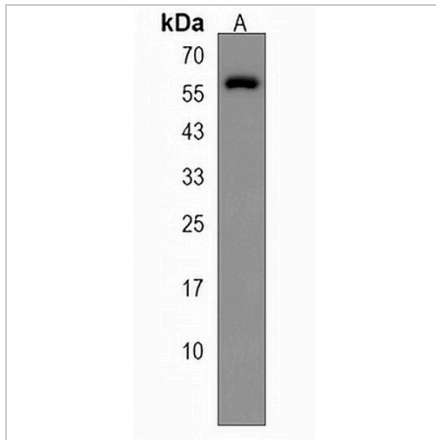
Description	Rabbit polyclonal antibody to ASPG
Specificity	Recognizes endogenous levels of ASPG protein.
Antibody Type	Primary antibody
Immunogen	KLH-conjugated synthetic peptide encompassing a sequence within the Central region of human ASPG. The exact sequence is proprietary.
Purification	The antibody was purified by immunogen affinity chromatography.
Molecular Weight	Predicted: 60 kD; Observed: 60 kD
Form/Buffer	Liquid in 0.42% Potassium phosphate, 0.87% Sodium chloride, pH 7.3, 30% glycerol, and 0.01% sodium azide.
Alternative Names	C14orf76; 60 kDa lysophospholipase
Gene Symbol	ASPG
Entrez Gene	374569(Human)
SwissProt	Q86U10(Human)

*AREX continuously optimizes our products. Webpage content may not reflect the latest updates. For inquiries, please contact info@arexbio.com or your local distributor.

*Clone Number, Reactivity, Source/Host and Clonality can be found in the product name and Key Features section above.

DATASHEET**ASPG Rabbit Polyclonal Antibody**

CAT. NO. APA18006

DATA

Western blot analysis of ASPG expression in HepG2 (A) whole cell lysates. (Predicted band size: 60 kD; Observed band size: 60 kD)

STORAGE

Store at 4°C short term. For long term storage, store at -20°C, avoiding freeze/thaw cycles.

NOTE

For Research Use Only. Not for diagnostic, therapeutics, prophylactic or in vivo use.