

DATASHEET

VKORC1L1 Rabbit Polyclonal Antibody

CAT. NO. APA18011

KEY FEATURES

Target	VKORC1L1	Source / Host	Rabbit
Reactivity	Human, Mouse, Rat	Clonality	Polyclonal
Applications	WB	Conjugation	Unconjugated
Form / Buffer	Liquid in 0.42% Potassium phosphate, 0.87% Sodium chloride, pH 7.3, 30% glycerol, and 0.01% sodium azide.		Storage at -20°C

BACKGROUND

Involved in vitamin K metabolism. Can reduce inactive vitamin K 2,3-epoxide to active vitamin K, and may contribute to vitamin K-mediated protection against oxidative stress. Plays a role in vitamin K-dependent gamma-carboxylation of Glu residues in target proteins.

APPLICATION

To ensure optimal assay performance, AREX recommends conducting reagent titration tailored to each testing system for optimal detection results.

WB	1:500 - 1:1000
----	----------------

*Results are sample-specific. Please refer to your local assay conditions and test parameters for reference.

PRODUCT OVERVIEW

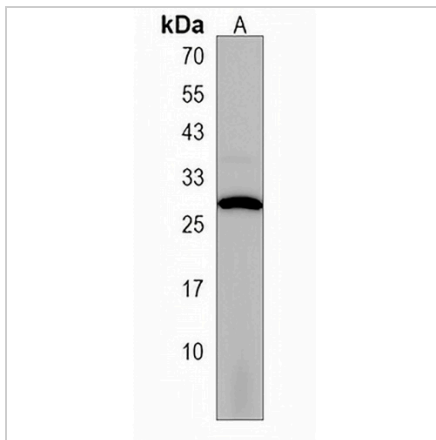
Description	Rabbit polyclonal antibody to VKORC1L1
Specificity	Recognizes endogenous levels of VKORC1L1 protein.
Antibody Type	Primary antibody
Immunogen	KLH-conjugated synthetic peptide encompassing a sequence within the N-terminal region of human VKORC1L1. The exact sequence is proprietary.
Purification	The antibody was purified by immunogen affinity chromatography.
Molecular Weight	Predicted: 19 kD; Observed: 27 kD
Form/Buffer	Liquid in 0.42% Potassium phosphate, 0.87% Sodium chloride, pH 7.3, 30% glycerol, and 0.01% sodium azide.
Alternative Names	Vitamin K epoxide reductase complex subunit 1-like protein 1; VKORC1-like protein 1
Gene Symbol	VKORC1L1
Entrez Gene	154807(Human); 69568(Mouse); 399684(Rat)
SwissProt	Q8N0U8(Human); Q6TEK5(Mouse); Q6TEK3(Rat)

*AREX continuously optimizes our products. Webpage content may not reflect the latest updates. For inquiries, please contact info@arexbio.com or your local distributor.

*Clone Number, Reactivity, Source/Host and Clonality can be found in the product name and Key Features section above.

DATASHEET**VKORC1L1 Rabbit Polyclonal Antibody**

CAT. NO. APA18011

DATA

Western blot analysis of VKORC1L1 expression in mouse brain (A) whole cell lysates.
(Predicted band size: 19 kD; Observed band size: 27 kD)

STORAGE

Store at 4°C short term. For long term storage, store at -20°C, avoiding freeze/thaw cycles.

NOTE

For Research Use Only. Not for diagnostic, therapeutics, prophylactic or in vivo use.