

DATASHEET

PIK3IP1 Rabbit Polyclonal Antibody

CAT. NO. APA18025

KEY FEATURES

Target	PIK3IP1	Source / Host	Rabbit
Reactivity	Human	Clonality	Polyclonal
Applications	WB	Conjugation	Unconjugated
Form / Buffer	Liquid in 0.42% Potassium phosphate, 0.87% Sodium chloride, pH 7.3, 30% glycerol, and 0.01% sodium azide.		Storage at -20°C

BACKGROUND

Negative regulator of hepatic phosphatidylinositol 3-kinase (PI3K) activity.

APPLICATION

To ensure optimal assay performance, AREX recommends conducting reagent titration tailored to each testing system for optimal detection results.

WB	1:500 - 1:1000
----	----------------

*Results are sample-specific. Please refer to your local assay conditions and test parameters for reference.

PRODUCT OVERVIEW

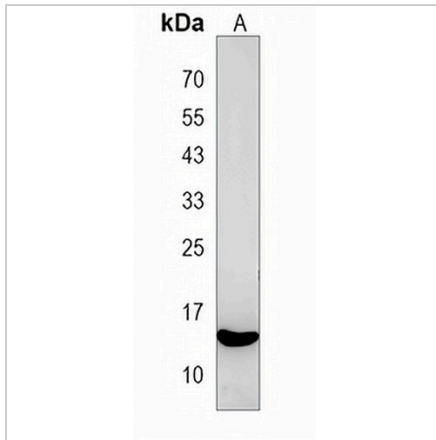
Description	Rabbit polyclonal antibody to PIK3IP1
Specificity	Recognizes endogenous levels of PIK3IP1 protein.
Antibody Type	Primary antibody
Immunogen	KLH-conjugated synthetic peptide encompassing a sequence within the C-terminal region of human PIK3IP1. The exact sequence is proprietary.
Purification	The antibody was purified by immunogen affinity chromatography.
Molecular Weight	Predicted: 28 kD; Observed: 15 kD
Form/Buffer	Liquid in 0.42% Potassium phosphate, 0.87% Sodium chloride, pH 7.3, 30% glycerol, and 0.01% sodium azide.
Alternative Names	HGFL; Phosphoinositide-3-kinase-interacting protein 1; Kringle domain-containing protein HGFL
Gene Symbol	PIK3IP1
Entrez Gene	113791(Human)
SwissProt	Q96FE7(Human)

*AREX continuously optimizes our products. Webpage content may not reflect the latest updates. For inquiries, please contact info@arexbio.com or your local distributor.

*Clone Number, Reactivity, Source/Host and Clonality can be found in the product name and Key Features section above.

DATASHEET**PIK3IP1 Rabbit Polyclonal Antibody**

CAT. NO. APA18025

DATA

Western blot analysis of PIK3IP1 expression in K562 (A) whole cell lysates. (Predicted band size: 28 kD; Observed band size: 15 kD)

STORAGE

Store at 4°C short term. For long term storage, store at -20°C, avoiding freeze/thaw cycles.

NOTE

For Research Use Only. Not for diagnostic, therapeutics, prophylactic or in vivo use.