

DATASHEET

MARCH11 Rabbit Polyclonal Antibody

CAT. NO. APA18026

KEY FEATURES

Target	MARCH11	Source / Host	Rabbit
Reactivity	Human	Clonality	Polyclonal
Applications	WB	Conjugation	Unconjugated
Form / Buffer	Liquid in 0.42% Potassium phosphate, 0.87% Sodium chloride, pH 7.3, 30% glycerol, and 0.01% sodium azide.		Storage at-20°C

BACKGROUND

E3 ubiquitin-protein ligase that mediates polyubiquitination of CD4. E3 ubiquitin ligases accept ubiquitin from an E2 ubiquitin-conjugating enzyme in the form of a thioester and then directly transfer the ubiquitin to targeted substrates. May play a role in ubiquitin-dependent protein sorting in developing spermatids.

APPLICATION

To ensure optimal assay performance, AREX recommends conducting reagent titration tailored to each testing system for optimal detection results.

WB	1:500 - 1:1000
----	----------------

*Results are sample-specific. Please refer to your local assay conditions and test parameters for reference.

PRODUCT OVERVIEW

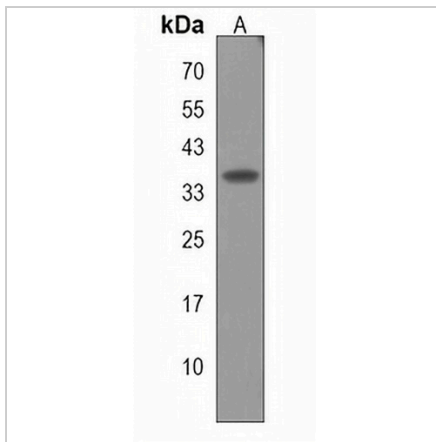
Description	Rabbit polyclonal antibody to MARCH11
Specificity	Recognizes endogenous levels of MARCH11 protein.
Antibody Type	Primary antibody
Immunogen	KLH-conjugated synthetic peptide encompassing a sequence within the C-terminal region of human MARCH11. The exact sequence is proprietary.
Purification	The antibody was purified by immunogen affinity chromatography.
Molecular Weight	Predicted: 43 kD; Observed: 36 kD
Form/Buffer	Liquid in 0.42% Potassium phosphate, 0.87% Sodium chloride, pH 7.3, 30% glycerol, and 0.01% sodium azide.
Alternative Names	E3 ubiquitin-protein ligase MARCH11; Membrane-associated RING finger protein 11; Membrane-associated RING-CH protein XI; MARCH-XI
Gene Symbol	MARCH11
Entrez Gene	441061(Human)
SwissProt	A6NNE9(Human)

*AREX continuously optimizes our products. Webpage content may not reflect the latest updates. For inquiries, please contact info@arexbio.com or your local distributor.

*Clone Number, Reactivity, Source/Host and Clonality can be found in the product name and Key Features section above.

DATASHEET**MARCH11 Rabbit Polyclonal Antibody**

CAT. NO. APA18026

DATA

Western blot analysis of MARCH11 expression in NCIH460 (A) whole cell lysates.
(Predicted band size: 43 kD; Observed band size: 36 kD)

STORAGE

Store at 4°C short term. For long term storage, store at -20°C, avoiding freeze/thaw cycles.

NOTE

For Research Use Only. Not for diagnostic, therapeutics, prophylactic or in vivo use.