

DATASHEET

EHD1 Rabbit Polyclonal Antibody

CAT. NO. APA18027

KEY FEATURES

Target	EHD1	Source / Host	Rabbit
Reactivity	Human	Clonality	Polyclonal
Applications	WB	Conjugation	Unconjugated
Form / Buffer	Liquid in 0.42% Potassium phosphate, 0.87% Sodium chloride, pH 7.3, 30% glycerol, and 0.01% sodium azide.		Storage at -20°C

BACKGROUND

ATP- and membrane-binding protein that controls membrane reorganization/tubulation upon ATP hydrolysis. In vitro causes vesiculation of endocytic membranes . Acts in early endocytic membrane fusion and membrane trafficking of recycling endosomes . Recruited to endosomal membranes upon nerve growth factor stimulation, indirectly regulates neurite outgrowth . Plays a role in myoblast fusion . Involved in the unidirectional retrograde dendritic transport of endocytosed BACE1 and in efficient sorting of BACE1 to axons implicating a function in neuronal APP processing . Plays a role in the formation of the ciliary vesicle (CV), an early step in cilium biogenesis .

APPLICATION

To ensure optimal assay performance, AREX recommends conducting reagent titration tailored to each testing system for optimal detection results.

WB	1:500 - 1:1000
----	----------------

*Results are sample-specific. Please refer to your local assay conditions and test parameters for reference.

PRODUCT OVERVIEW

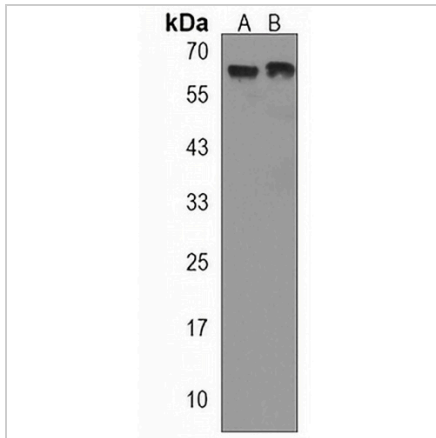
Description	Rabbit polyclonal antibody to EHD1
Specificity	Recognizes endogenous levels of EHD1 protein.
Antibody Type	Primary antibody
Immunogen	KLH-conjugated synthetic peptide encompassing a sequence within the C-terminal region of human EHD1. The exact sequence is proprietary.
Purification	The antibody was purified by immunogen affinity chromatography.
Molecular Weight	Predicted: 60 kD; Observed: 61 kD
Form/Buffer	Liquid in 0.42% Potassium phosphate, 0.87% Sodium chloride, pH 7.3, 30% glycerol, and 0.01% sodium azide.
Alternative Names	PAST; PAST1; EH domain-containing protein 1; PAST homolog 1; hPAST1; Testilin
Gene Symbol	EHD1
Entrez Gene	10938(Human)
SwissProt	Q9H4M9(Human)

*AREX continuously optimizes our products. Webpage content may not reflect the latest updates. For inquiries, please contact info@arexbio.com or your local distributor.

*Clone Number, Reactivity, Source/Host and Clonality can be found in the product name and Key Features section above.

DATASHEET**EHD1 Rabbit Polyclonal Antibody**

CAT. NO. APA18027

DATA

Western blot analysis of EHD1 expression in HepG2 (A), HeLa (B) whole cell lysates.
(Predicted band size: 60 kD; Observed band size: 61 kD)

STORAGE

Store at 4°C short term. For long term storage, store at -20°C, avoiding freeze/thaw cycles.

NOTE

For Research Use Only. Not for diagnostic, therapeutics, prophylactic or in vivo use.