

DATASHEET

LRIG2 Rabbit Polyclonal Antibody

CAT. NO. APA18029

KEY FEATURES

Target	LRIG2	Source / Host	Rabbit
Reactivity	Human	Clonality	Polyclonal
Applications	WB	Conjugation	Unconjugated
Form / Buffer	Liquid in 0.42% Potassium phosphate, 0.87% Sodium chloride, pH 7.3, 30% glycerol, and 0.01% sodium azide.		Storage at -20°C

BACKGROUND

This gene encodes a transmembrane protein containing leucine-rich repeats and immunoglobulin-like domains. The encoded protein promotes epidermal growth factor signalling, resulting in increased proliferation. Its expression in the cytoplasm of glioma cells is correlated with poor survival. Mutations in this gene can cause urofacial syndrome. Alternative splicing results in multiple transcript variants.

APPLICATION

To ensure optimal assay performance, AREX recommends conducting reagent titration tailored to each testing system for optimal detection results.

WB	1:500 - 1:1000
----	----------------

*Results are sample-specific. Please refer to your local assay conditions and test parameters for reference.

PRODUCT OVERVIEW

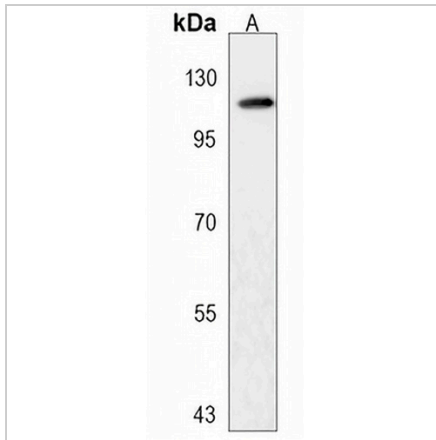
Description	Rabbit polyclonal antibody to LRIG2
Specificity	Recognizes endogenous levels of LRIG2 protein.
Antibody Type	Primary antibody
Immunogen	KLH-conjugated synthetic peptide encompassing a sequence within the C-terminal region of human LRIG2. The exact sequence is proprietary.
Purification	The antibody was purified by immunogen affinity chromatography.
Molecular Weight	Predicted: 118 kD; Observed: 119 kD
Form/Buffer	Liquid in 0.42% Potassium phosphate, 0.87% Sodium chloride, pH 7.3, 30% glycerol, and 0.01% sodium azide.
Alternative Names	KIAA0806; LIG2; Leucine-rich repeats and immunoglobulin-like domains protein 2; LIG-2
Gene Symbol	LRIG2
Entrez Gene	9860(Human)
SwissProt	O94898(Human)

*AREX continuously optimizes our products. Webpage content may not reflect the latest updates. For inquiries, please contact info@arexbio.com or your local distributor.

*Clone Number, Reactivity, Source/Host and Clonality can be found in the product name and Key Features section above.

DATASHEET**LRIG2 Rabbit Polyclonal Antibody**

CAT. NO. APA18029

DATA

Western blot analysis of LRIG2 expression in K562 (A) whole cell lysates. (Predicted band size: 118 kD; Observed band size: 119 kD)

STORAGE

Store at 4°C short term. For long term storage, store at -20°C, avoiding freeze/thaw cycles.

NOTE

For Research Use Only. Not for diagnostic, therapeutics, prophylactic or in vivo use.