

DATASHEET

MYLK3 Rabbit Polyclonal Antibody

CAT. NO. APA18035

KEY FEATURES

Target	MYLK3	Source / Host	Rabbit
Reactivity	Mouse	Clonality	Polyclonal
Applications	WB	Conjugation	Unconjugated
Form / Buffer	Liquid in 0.42% Potassium phosphate, 0.87% Sodium chloride, pH 7.3, 30% glycerol, and 0.01% sodium azide.		Storage at -20°C

BACKGROUND

Phosphorylation of cardiac myosin heavy chains (see MYH7B, MIM 609928) and light chains (see MYL2, MIM 160781) by a kinase, such as MYLK3, potentiates the force and rate of cross-bridge recruitment in cardiac myocytes (Chan et al., 2008 [PubMed 18202317]).

APPLICATION

To ensure optimal assay performance, AREX recommends conducting reagent titration tailored to each testing system for optimal detection results.

WB	1:500 - 1:1000
----	----------------

*Results are sample-specific. Please refer to your local assay conditions and test parameters for reference.

PRODUCT OVERVIEW

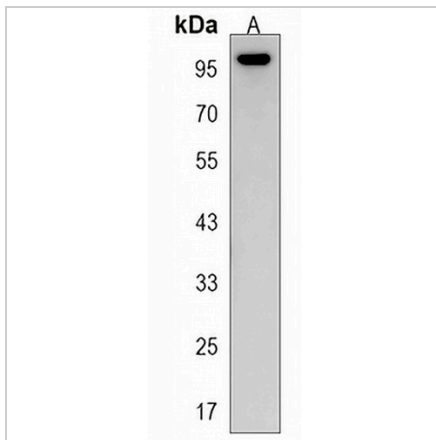
Description	Rabbit polyclonal antibody to MYLK3
Specificity	Recognizes endogenous levels of MYLK3 protein.
Antibody Type	Primary antibody
Immunogen	KLH-conjugated synthetic peptide encompassing a sequence within the N-terminal region of human MYLK3. The exact sequence is proprietary.
Purification	The antibody was purified by immunogen affinity chromatography.
Molecular Weight	Predicted: 86 kD; Observed: 95 kD
Form/Buffer	Liquid in 0.42% Potassium phosphate, 0.87% Sodium chloride, pH 7.3, 30% glycerol, and 0.01% sodium azide.
Alternative Names	MLCK; Myosin light chain kinase 3; Cardiac-MyBP-C-associated Ca/CaM kinase; Cardiac-MLCK
Gene Symbol	MYLK3
Entrez Gene	213435(Mouse)
SwissProt	Q3UIZ8(Mouse)

*AREX continuously optimizes our products. Webpage content may not reflect the latest updates. For inquiries, please contact info@arexbio.com or your local distributor.

*Clone Number, Reactivity, Source/Host and Clonality can be found in the product name and Key Features section above.

DATASHEET**MYLK3 Rabbit Polyclonal Antibody**

CAT. NO. APA18035

DATA

Western blot analysis of MYLK3 expression in mouse heart (A) whole cell lysates.
(Predicted band size: 86 kD; Observed band size: 95 kD)

STORAGE

Store at 4°C short term. For long term storage, store at -20°C, avoiding freeze/thaw cycles.

NOTE

For Research Use Only. Not for diagnostic, therapeutics, prophylactic or in vivo use.