

DATASHEET

ANKS6 Rabbit Polyclonal Antibody

CAT. NO. APA18046

KEY FEATURES

Target	ANKS6	Source / Host	Rabbit
Reactivity	Human	Clonality	Polyclonal
Applications	WB	Conjugation	Unconjugated
Form / Buffer	Liquid in 0.42% Potassium phosphate, 0.87% Sodium chloride, pH 7.3, 30% glycerol, and 0.01% sodium azide.		Storage at-20°C

BACKGROUND

Required for renal function.

APPLICATION

To ensure optimal assay performance, AREX recommends conducting reagent titration tailored to each testing system for optimal detection results.

WB	1:500 - 1:1000
----	----------------

*Results are sample-specific. Please refer to your local assay conditions and test parameters for reference.

PRODUCT OVERVIEW

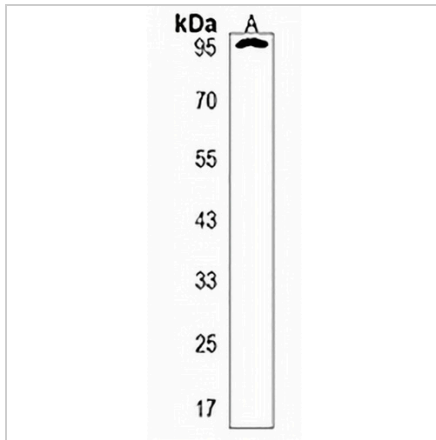
Description	Rabbit polyclonal antibody to ANKS6
Specificity	Recognizes endogenous levels of ANKS6 protein.
Antibody Type	Primary antibody
Immunogen	KLH-conjugated synthetic peptide encompassing a sequence within the Central region of human ANKS6. The exact sequence is proprietary.
Purification	The antibody was purified by immunogen affinity chromatography.
Molecular Weight	Predicted: 92 kD; Observed: 95 kD
Form/Buffer	Liquid in 0.42% Potassium phosphate, 0.87% Sodium chloride, pH 7.3, 30% glycerol, and 0.01% sodium azide.
Alternative Names	ANKRD14; PKDR1; SAMD6; Ankyrin repeat and SAM domain-containing protein 6; Ankyrin repeat domain-containing protein 14; SamCystin; Sterile alpha motif domain-containing protein 6; SAM domain-containing protein 6
Gene Symbol	ANKS6
Entrez Gene	203286(Human)
SwissProt	Q68DC2(Human)

*AREX continuously optimizes our products. Webpage content may not reflect the latest updates. For inquiries, please contact info@arexbio.com or your local distributor.

*Clone Number, Reactivity, Source/Host and Clonality can be found in the product name and Key Features section above.

DATASHEET**ANKS6 Rabbit Polyclonal Antibody**

CAT. NO. APA18046

DATA

Western blot analysis of ANKS6 expression in K562 (A) whole cell lysates. (Predicted band size: 92 kD; Observed band size: 95 kD)

STORAGE

Store at 4°C short term. For long term storage, store at -20°C, avoiding freeze/thaw cycles.

NOTE

For Research Use Only. Not for diagnostic, therapeutics, prophylactic or in vivo use.