

DATASHEET

CELA2A Rabbit Polyclonal Antibody

CAT. NO. APA18049

KEY FEATURES

Target	CELA2A	Source / Host	Rabbit
Reactivity	Human	Clonality	Polyclonal
Applications	WB	Conjugation	Unconjugated
Form / Buffer	Liquid in 0.42% Potassium phosphate, 0.87% Sodium chloride, pH 7.3, 30% glycerol, and 0.01% sodium azide.		Storage at -20°C

BACKGROUND

Elastase that enhances insulin signaling and might have a physiologic role in cellular glucose metabolism. Circulates in plasma and reduces platelet hyperactivation, triggers both insulin secretion and degradation, and increases insulin sensitivity.

APPLICATION

To ensure optimal assay performance, AREX recommends conducting reagent titration tailored to each testing system for optimal detection results.

WB	1:500 - 1:1000
----	----------------

*Results are sample-specific. Please refer to your local assay conditions and test parameters for reference.

PRODUCT OVERVIEW

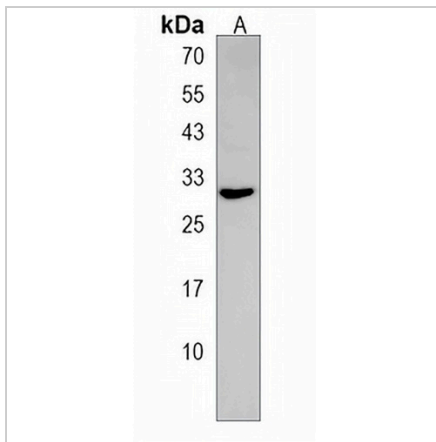
Description	Rabbit polyclonal antibody to CELA2A
Specificity	Recognizes endogenous levels of CELA2A protein.
Antibody Type	Primary antibody
Immunogen	KLH-conjugated synthetic peptide encompassing a sequence within the C-terminal region of human CELA2A. The exact sequence is proprietary.
Purification	The antibody was purified by immunogen affinity chromatography.
Molecular Weight	Predicted: 28 kD; Observed: 29 kD
Form/Buffer	Liquid in 0.42% Potassium phosphate, 0.87% Sodium chloride, pH 7.3, 30% glycerol, and 0.01% sodium azide.
Alternative Names	ELA2A; Chymotrypsin-like elastase family member 2A; Elastase-2A
Gene Symbol	CELA2A
Entrez Gene	63036(Human)
SwissProt	P08217(Human)

*AREX continuously optimizes our products. Webpage content may not reflect the latest updates. For inquiries, please contact info@arexbio.com or your local distributor.

*Clone Number, Reactivity, Source/Host and Clonality can be found in the product name and Key Features section above.

DATASHEET**CELA2A Rabbit Polyclonal Antibody**

CAT. NO. APA18049

DATA

Western blot analysis of CELA2A expression in human pancreas (A) whole cell lysates.
(Predicted band size: 28 kD; Observed band size: 29 kD)

STORAGE

Store at 4°C short term. For long term storage, store at -20°C, avoiding freeze/thaw cycles.

NOTE

For Research Use Only. Not for diagnostic, therapeutics, prophylactic or in vivo use.