

DATASHEET

GTF2A1L Rabbit Polyclonal Antibody

CAT. NO. APA18072

KEY FEATURES

Target	GTF2A1L	Source / Host	Rabbit
Reactivity	Human	Clonality	Polyclonal
Applications	WB	Conjugation	Unconjugated
Form / Buffer	Liquid in 0.42% Potassium phosphate, 0.87% Sodium chloride, pH 7.3, 30% glycerol, and 0.01% sodium azide.		Storage at -20°C

BACKGROUND

May function as a testis specific transcription factor. Binds DNA in conjunction with GTF2A2 and TBP (the TATA-binding protein) and together with GTF2A2, allows mRNA transcription.

APPLICATION

To ensure optimal assay performance, AREX recommends conducting reagent titration tailored to each testing system for optimal detection results.

WB	1:500 - 1:1000
----	----------------

*Results are sample-specific. Please refer to your local assay conditions and test parameters for reference.

PRODUCT OVERVIEW

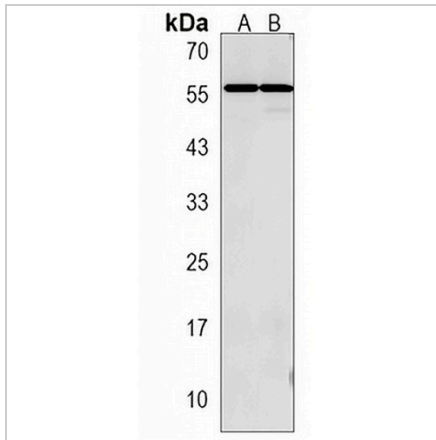
Description	Rabbit polyclonal antibody to GTF2A1L
Specificity	Recognizes endogenous levels of GTF2A1L protein.
Antibody Type	Primary antibody
Immunogen	KLH-conjugated synthetic peptide encompassing a sequence within the C-terminal region of human GTF2A1L. The exact sequence is proprietary.
Purification	The antibody was purified by immunogen affinity chromatography.
Molecular Weight	Predicted: 52 kD; Observed: 58 kD
Form/Buffer	Liquid in 0.42% Potassium phosphate, 0.87% Sodium chloride, pH 7.3, 30% glycerol, and 0.01% sodium azide.
Alternative Names	ALF; GTF2A1LF; TFIIA-alpha and beta-like factor; General transcription factor II A, 1-like factor
Gene Symbol	GTF2A1L
Entrez Gene	11036(Human)
SwissProt	Q9UNN4(Human)

*AREX continuously optimizes our products. Webpage content may not reflect the latest updates. For inquiries, please contact info@arexbio.com or your local distributor.

*Clone Number, Reactivity, Source/Host and Clonality can be found in the product name and Key Features section above.

DATASHEET**GTF2A1L Rabbit Polyclonal Antibody**

CAT. NO. APA18072

DATA

Western blot analysis of GTF2A1L expression in human testis (A), NCIH460 (B) whole cell lysates. (Predicted band size: 52 kD; Observed band size: 58 kD)

STORAGE

Store at 4°C short term. For long term storage, store at -20°C, avoiding freeze/thaw cycles.

NOTE

For Research Use Only. Not for diagnostic, therapeutics, prophylactic or in vivo use.