

## DATASHEET

# CTDSP2 Rabbit Polyclonal Antibody

CAT. NO. APA18075

### KEY FEATURES

Target	CTDSP2	Source / Host	Rabbit
Reactivity	Human	Clonality	Polyclonal
Applications	WB	Conjugation	Unconjugated
Form / Buffer	Liquid in 0.42% Potassium phosphate, 0.87% Sodium chloride, pH 7.3, 30% glycerol, and 0.01% sodium azide.		Storage at-20°C

### BACKGROUND

Preferentially catalyzes the dephosphorylation of 'Ser-5' within the tandem 7 residue repeats in the C-terminal domain (CTD) of the largest RNA polymerase II subunit POLR2A. Negatively regulates RNA polymerase II transcription, possibly by controlling the transition from initiation/capping to processive transcript elongation. Recruited by REST to neuronal genes that contain RE-1 elements, leading to neuronal gene silencing in non-neuronal cells. May contribute to the development of sarcomas.

### APPLICATION

To ensure optimal assay performance, AREX recommends conducting reagent titration tailored to each testing system for optimal detection results.

WB	1:500 - 1:1000
----	----------------

\*Results are sample-specific. Please refer to your local assay conditions and test parameters for reference.

### PRODUCT OVERVIEW

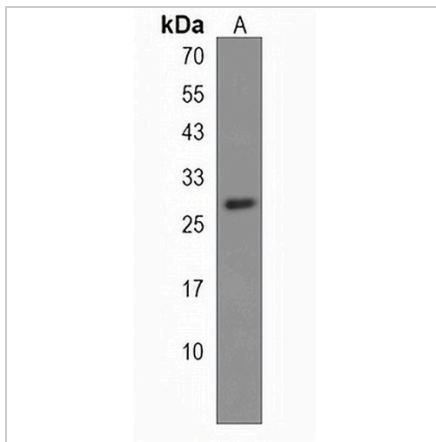
Description	Rabbit polyclonal antibody to CTDSP2
Specificity	Recognizes endogenous levels of CTDSP2 protein.
Antibody Type	Primary antibody
Immunogen	KLH-conjugated synthetic peptide encompassing a sequence within the N-terminal region of human CTDSP2. The exact sequence is proprietary.
Purification	The antibody was purified by immunogen affinity chromatography.
Molecular Weight	Predicted: 30 kD; Observed: 28 kD
Form/Buffer	Liquid in 0.42% Potassium phosphate, 0.87% Sodium chloride, pH 7.3, 30% glycerol, and 0.01% sodium azide.
Alternative Names	NIF2; OS4; SCP2; Carboxy-terminal domain RNA polymerase II polypeptide A small phosphatase 2; Nuclear LIM interactor-interacting factor 2; NLI-interacting factor 2; Protein OS-4; Small C-terminal domain phosphatase 2; Small CTD phosphatase 2; SCP2
Gene Symbol	CTDSP2
Entrez Gene	10106(Human)
SwissProt	O14595(Human)

\*AREX continuously optimizes our products. Webpage content may not reflect the latest updates. For inquiries, please contact [info@arexbio.com](mailto:info@arexbio.com) or your local distributor.

\*Clone Number, Reactivity, Source/Host and Clonality can be found in the product name and Key Features section above.

**DATASHEET****CTDSP2 Rabbit Polyclonal Antibody**

CAT. NO. APA18075

**DATA**

Western blot analysis of CTDSP2 expression in 293 (A) whole cell lysates. (Predicted band size: 30 kD; Observed band size: 28 kD)

**STORAGE**

Store at 4°C short term. For long term storage, store at -20°C, avoiding freeze/thaw cycles.

**NOTE**

For Research Use Only. Not for diagnostic, therapeutics, prophylactic or in vivo use.