

**DATASHEET**

**Synbindin Rabbit Polyclonal Antibody**

CAT. NO. APA18082

**KEY FEATURES**

Target	Synbindin	Source / Host	Rabbit
Reactivity	Human	Clonality	Polyclonal
Applications	WB, IHC	Conjugation	Unconjugated
Form / Buffer	Liquid in 0.42% Potassium phosphate, 0.87% Sodium chloride, pH 7.3, 30% glycerol, and 0.01% sodium azide.		Storage at-20°C

**BACKGROUND**

Core component of the TRAPP complexes which has a function of guanine nucleotide exchange factor activity for Rab1 GTPase (Probable). Plays a role in vesicular transport from endoplasmic reticulum to Golgi and autophagy . Plays a role in vesicular transport from endoplasmic reticulum to Golgi and autophagy . May play a role in dendrite postsynaptic membrane trafficking .

**APPLICATION**

To ensure optimal assay performance, AREX recommends conducting reagent titration tailored to each testing system for optimal detection results.

WB	1:500 - 1:1000
IHC	1:50 - 1:200

\*Results are sample-specific. Please refer to your local assay conditions and test parameters for reference.

**PRODUCT OVERVIEW**

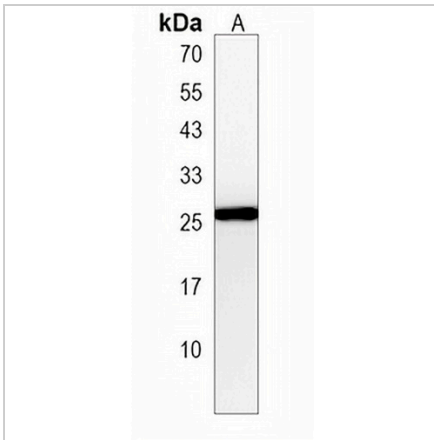
Description	Rabbit polyclonal antibody to Synbindin
Specificity	Recognizes endogenous levels of Synbindin protein.
Antibody Type	Primary antibody
Immunogen	KLH-conjugated synthetic peptide encompassing a sequence within the N-terminal region of human Synbindin. The exact sequence is proprietary.
Purification	The antibody was purified by immunogen affinity chromatography.
Molecular Weight	Predicted: 24 kD; Observed: 26 kD
Form/Buffer	Liquid in 0.42% Potassium phosphate, 0.87% Sodium chloride, pH 7.3, 30% glycerol, and 0.01% sodium azide.
Alternative Names	SBDN; Trafficking protein particle complex subunit 4; Hematopoietic stem/progenitor cell protein 172; Synbindin; TRS23 homolog
Gene Symbol	TRAPPC4
Entrez Gene	51399(Human)
SwissProt	Q9Y296(Human)

\*AREX continuously optimizes our products. Webpage content may not reflect the latest updates. For inquiries, please contact [info@arexbio.com](mailto:info@arexbio.com) or your local distributor.

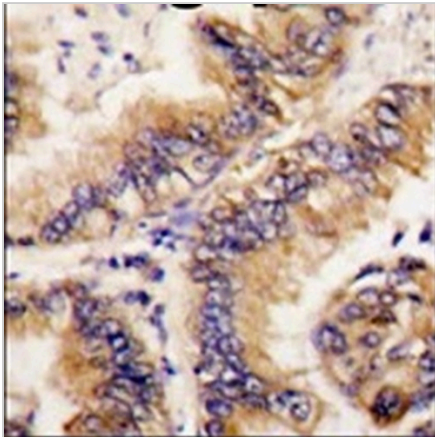
\*Clone Number, Reactivity, Source/Host and Clonality can be found in the product name and Key Features section above.

**DATASHEET****Synbindin Rabbit Polyclonal Antibody**

CAT. NO. APA18082

**DATA**

Western blot analysis of Synbindin expression in HL60 (A) whole cell lysates. (Predicted band size: 24 kD; Observed band size: 26 kD)



Immunohistochemical analysis of Synbindin staining in human lung carcinoma formalin fixed paraffin embedded tissue section. The section was pre-treated using heat mediated antigen retrieval with sodium citrate buffer (pH 6.0). The section was then incubated with the antibody at room temperature and detected using an HRP conjugated compact polymer system. DAB was used as the chromogen. The section was then counterstained with haematoxylin and mounted with DPX.

**STORAGE**

Store at 4°C short term. For long term storage, store at -20°C, avoiding freeze/thaw cycles.

**NOTE**

For Research Use Only. Not for diagnostic, therapeutics, prophylactic or in vivo use.