

DATASHEET

OR4C12 Rabbit Polyclonal Antibody

CAT. NO. APA18096

KEY FEATURES

Target	OR4C12	Source / Host	Rabbit
Reactivity	Human	Clonality	Polyclonal
Applications	WB	Conjugation	Unconjugated
Form / Buffer	Liquid in 0.42% Potassium phosphate, 0.87% Sodium chloride, pH 7.3, 30% glycerol, and 0.01% sodium azide.		Storage at -20°C

BACKGROUND

Acts as a receptor for R(-)-carvone in pancreatic cells, initiating signaling pathways involving GNAS, elevated intracellular Ca(2+), and increased cAMP levels. Upon activation, promotes glucose-stimulated insulin secretion.

APPLICATION

To ensure optimal assay performance, AREX recommends conducting reagent titration tailored to each testing system for optimal detection results.

WB	1:500 - 1:1000
----	----------------

*Results are sample-specific. Please refer to your local assay conditions and test parameters for reference.

PRODUCT OVERVIEW

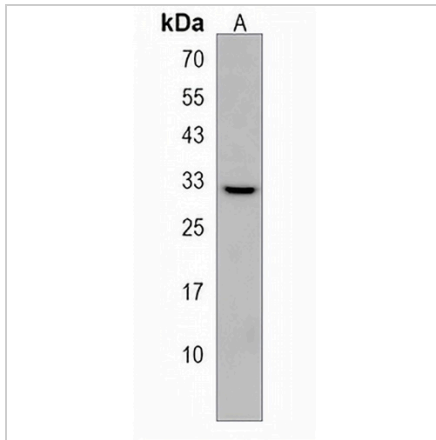
Description	Rabbit polyclonal antibody to OR4C12
Specificity	Recognizes endogenous levels of OR4C12 protein.
Antibody Type	Primary antibody
Immunogen	KLH-conjugated synthetic peptide encompassing a sequence within the C-terminal region of human OR4C12. The exact sequence is proprietary.
Purification	The antibody was purified by immunogen affinity chromatography.
Molecular Weight	Predicted: 34 kD; Observed: 34 kD
Form/Buffer	Liquid in 0.42% Potassium phosphate, 0.87% Sodium chloride, pH 7.3, 30% glycerol, and 0.01% sodium azide.
Alternative Names	Olfactory receptor 4C12; Olfactory receptor OR11-259
Gene Symbol	OR4C12
Entrez Gene	283093(Human)
SwissProt	Q96R67(Human)

*AREX continuously optimizes our products. Webpage content may not reflect the latest updates. For inquiries, please contact info@arexbio.com or your local distributor.

*Clone Number, Reactivity, Source/Host and Clonality can be found in the product name and Key Features section above.

DATASHEET**OR4C12 Rabbit Polyclonal Antibody**

CAT. NO. APA18096

DATA

Western blot analysis of OR4C12 expression in HepG2 (A) whole cell lysates. (Predicted band size: 34 kD; Observed band size: 34 kD)

STORAGE

Store at 4°C short term. For long term storage, store at -20°C, avoiding freeze/thaw cycles.

NOTE

For Research Use Only. Not for diagnostic, therapeutics, prophylactic or in vivo use.