

**DATASHEET**

**ALDH8A1 Rabbit Polyclonal Antibody**

CAT. NO. APA18100

**KEY FEATURES**

Target	ALDH8A1	Source / Host	Rabbit
Reactivity	Mouse	Clonality	Polyclonal
Applications	WB	Conjugation	Unconjugated
Form / Buffer	Liquid in 0.42% Potassium phosphate, 0.87% Sodium chloride, pH 7.3, 30% glycerol, and 0.01% sodium azide.		Storage at-20°C

**BACKGROUND**

This gene encodes a member of the aldehyde dehydrogenase family of proteins. The encoded protein has been implicated in the synthesis of 9-cis-retinoic acid and in the breakdown of the amino acid tryptophan. This enzyme converts 9-cis-retinal into the retinoid X receptor ligand 9-cis-retinoic acid, and has approximately 40-fold higher activity with 9-cis-retinal than with all-trans-retinal. In addition, this enzyme has been shown to catalyze the conversion of 2-aminomuconic semialdehyde to 2-aminomuconate in the kynurenine pathway of tryptophan catabolism.

**APPLICATION**

To ensure optimal assay performance, AREX recommends conducting reagent titration tailored to each testing system for optimal detection results.

WB	1:500 - 1:1000
----	----------------

\*Results are sample-specific. Please refer to your local assay conditions and test parameters for reference.

**PRODUCT OVERVIEW**

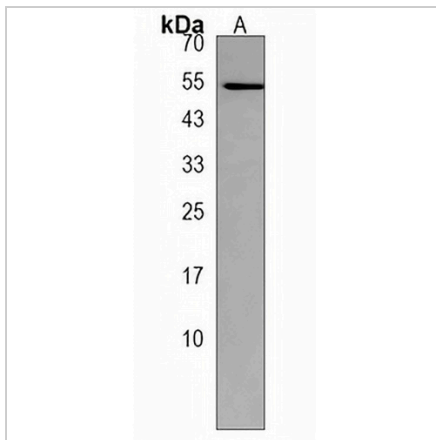
Description	Rabbit polyclonal antibody to ALDH8A1
Specificity	Recognizes endogenous levels of ALDH8A1 protein.
Antibody Type	Primary antibody
Immunogen	KLH-conjugated synthetic peptide encompassing a sequence within the C-terminal region of human ALDH8A1. The exact sequence is proprietary.
Purification	The antibody was purified by immunogen affinity chromatography.
Molecular Weight	Predicted: 53 kD; Observed: 55 kD
Form/Buffer	Liquid in 0.42% Potassium phosphate, 0.87% Sodium chloride, pH 7.3, 30% glycerol, and 0.01% sodium azide.
Alternative Names	ALDH12; Aldehyde dehydrogenase family 8 member A1; Aldehyde dehydrogenase 12
Gene Symbol	ALDH8A1
Entrez Gene	237320(Mouse)
SwissProt	Q8BH00(Mouse)

\*AREX continuously optimizes our products. Webpage content may not reflect the latest updates. For inquiries, please contact [info@arexbio.com](mailto:info@arexbio.com) or your local distributor.

\*Clone Number, Reactivity, Source/Host and Clonality can be found in the product name and Key Features section above.

**DATASHEET****ALDH8A1 Rabbit Polyclonal Antibody**

CAT. NO. APA18100

**DATA**

Western blot analysis of ALDH8A1 expression in mouse liver (A) whole cell lysates.  
(Predicted band size: 53 kD; Observed band size: 55 kD)

**STORAGE**

Store at 4°C short term. For long term storage, store at -20°C, avoiding freeze/thaw cycles.

**NOTE**

For Research Use Only. Not for diagnostic, therapeutics, prophylactic or in vivo use.