

DATASHEET

NTAL Rabbit Polyclonal Antibody

CAT. NO. APA18102

KEY FEATURES

| | | | |
|---------------|---|---------------|---------------------|
| Target | NTAL | Source / Host | Rabbit |
| Reactivity | Human | Clonality | Polyclonal |
| Applications | WB | Conjugation | Unconjugated |
| Form / Buffer | Liquid in 0.42% Potassium phosphate, 0.87% Sodium chloride, pH 7.3, 30% glycerol, and 0.01% sodium azide. | | Storage at -20°C |

BACKGROUND

Involved in FCER1 (high affinity immunoglobulin epsilon receptor)-mediated signaling in mast cells. May also be involved in BCR (B-cell antigen receptor)-mediated signaling in B-cells and FCGR1 (high affinity immunoglobulin gamma Fc receptor I)-mediated signaling in myeloid cells. Couples activation of these receptors and their associated kinases with distal intracellular events through the recruitment of GRB2.

APPLICATION

To ensure optimal assay performance, AREX recommends conducting reagent titration tailored to each testing system for optimal detection results.

| | |
|----|----------------|
| WB | 1:500 - 1:1000 |
|----|----------------|

*Results are sample-specific. Please refer to your local assay conditions and test parameters for reference.

PRODUCT OVERVIEW

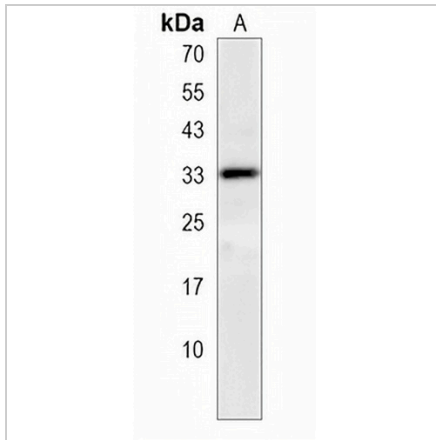
| | |
|-------------------|--|
| Description | Rabbit polyclonal antibody to NTAL |
| Specificity | Recognizes endogenous levels of NTAL protein. |
| Antibody Type | Primary antibody |
| Immunogen | KLH-conjugated synthetic peptide encompassing a sequence within the Central region of human NTAL. The exact sequence is proprietary. |
| Purification | The antibody was purified by immunogen affinity chromatography. |
| Molecular Weight | Predicted: 26 kD; Observed: 33 kD |
| Form/Buffer | Liquid in 0.42% Potassium phosphate, 0.87% Sodium chloride, pH 7.3, 30% glycerol, and 0.01% sodium azide. |
| Alternative Names | LAB; NTAL; WBS15; WBSCR15; WBSCR5; Linker for activation of T-cells family member 2; Linker for activation of B-cells; Membrane-associated adapter molecule; Non-T-cell activation linker; Williams-Beuren syndrome chromosomal region 15 protein; Williams-Beuren syndrome chromosomal region 5 protein |
| Gene Symbol | LAT2 |
| Entrez Gene | 7462(Human) |
| SwissProt | Q9GZY6(Human) |

*AREX continuously optimizes our products. Webpage content may not reflect the latest updates. For inquiries, please contact info@arexbio.com or your local distributor.

*Clone Number, Reactivity, Source/Host and Clonality can be found in the product name and Key Features section above.

DATASHEET**NTAL Rabbit Polyclonal Antibody**

CAT. NO. APA18102

DATA

Western blot analysis of NTAL expression in HeLa (A) whole cell lysates. (Predicted band size: 26 kD; Observed band size: 33 kD)

STORAGE

Store at 4°C short term. For long term storage, store at -20°C, avoiding freeze/thaw cycles.

NOTE

For Research Use Only. Not for diagnostic, therapeutics, prophylactic or in vivo use.