

**DATASHEET**

**ZDHHC6 Rabbit Polyclonal Antibody**

CAT. NO. APA18106

**KEY FEATURES**

Target	ZDHHC6	Source / Host	Rabbit
Reactivity	Human, Mouse	Clonality	Polyclonal
Applications	WB	Conjugation	Unconjugated
Form / Buffer	Liquid in 0.42% Potassium phosphate, 0.87% Sodium chloride, pH 7.3, 30% glycerol, and 0.01% sodium azide.		Storage at-20°C

**BACKGROUND**

Endoplasmic reticulum palmitoyl acyltransferase that mediates palmitoylation of proteins such as AMFR, CALX, ITPR1 and TFRC . Palmitoylates calnexin (CALX), which is required for its association with the ribosome-translocon complex and efficient folding of glycosylated proteins . Mediates palmitoylation of AMFR, promoting AMFR distribution to the peripheral endoplasmic reticulum . Together with SELENOK, palmitoylates ITPR1 in immune cells, leading to regulate ITPR1 stability and function . Stearoyltransferase that mediates stearoylation of TFRC to inhibit TFRC-mediated activation of the JNK pathway and mitochondrial fragmentation .

**APPLICATION**

To ensure optimal assay performance, AREX recommends conducting reagent titration tailored to each testing system for optimal detection results.

WB	1:500 - 1:1000
----	----------------

\*Results are sample-specific. Please refer to your local assay conditions and test parameters for reference.

**PRODUCT OVERVIEW**

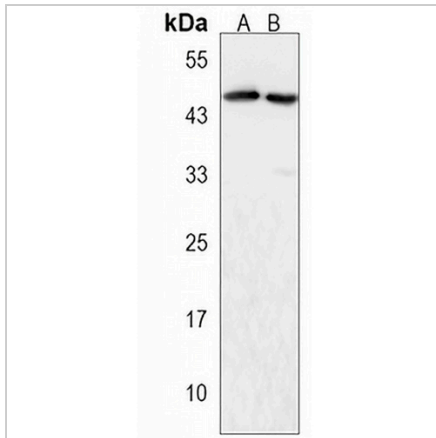
Description	Rabbit polyclonal antibody to ZDHHC6
Specificity	Recognizes endogenous levels of ZDHHC6 protein.
Antibody Type	Primary antibody
Immunogen	KLH-conjugated synthetic peptide encompassing a sequence within the C-terminal region of human ZDHHC6. The exact sequence is proprietary.
Purification	The antibody was purified by immunogen affinity chromatography.
Molecular Weight	Predicted: 47 kD; Observed: 47 kD
Form/Buffer	Liquid in 0.42% Potassium phosphate, 0.87% Sodium chloride, pH 7.3, 30% glycerol, and 0.01% sodium azide.
Alternative Names	ZNF376; Palmitoyltransferase ZDHHC6; Transmembrane protein H4; Zinc finger DHHC domain-containing protein 6; DHHC-6; Zinc finger protein 376
Gene Symbol	ZDHHC6
Entrez Gene	64429(Human); 66980(Mouse)
SwissProt	Q9H6R6(Human); Q9CPV7(Mouse)

\*AREX continuously optimizes our products. Webpage content may not reflect the latest updates. For inquiries, please contact [info@arexbio.com](mailto:info@arexbio.com) or your local distributor.

\*Clone Number, Reactivity, Source/Host and Clonality can be found in the product name and Key Features section above.

**DATASHEET****ZDHHC6 Rabbit Polyclonal Antibody**

CAT. NO. APA18106

**DATA**

Western blot analysis of ZDHHC6 expression in A431 (A), K562 (B) whole cell lysates. (Predicted band size: 47 kD; Observed band size: 47 kD)

**STORAGE**

Store at 4°C short term. For long term storage, store at -20°C, avoiding freeze/thaw cycles.

**NOTE**

For Research Use Only. Not for diagnostic, therapeutics, prophylactic or in vivo use.