

DATASHEET

mPR beta Rabbit Polyclonal Antibody

CAT. NO. APA18107

KEY FEATURES

Target	mPR beta	Source / Host	Rabbit
Reactivity	Human, Mouse	Clonality	Polyclonal
Applications	WB	Conjugation	Unconjugated
Form / Buffer	Liquid in 0.42% Potassium phosphate, 0.87% Sodium chloride, pH 7.3, 30% glycerol, and 0.01% sodium azide.		Storage at -20°C

BACKGROUND

Plasma membrane progesterone (P4) receptor coupled to G proteins receptor coupled to G proteins . Seems to act through a G(i) mediated pathway . May be involved in oocyte maturation . Also binds dehydroepiandrosterone (DHEA), pregnanolone, pregnenolone and allopregnanolone .

APPLICATION

To ensure optimal assay performance, AREX recommends conducting reagent titration tailored to each testing system for optimal detection results.

WB	1:500 - 1:1000
----	----------------

*Results are sample-specific. Please refer to your local assay conditions and test parameters for reference.

PRODUCT OVERVIEW

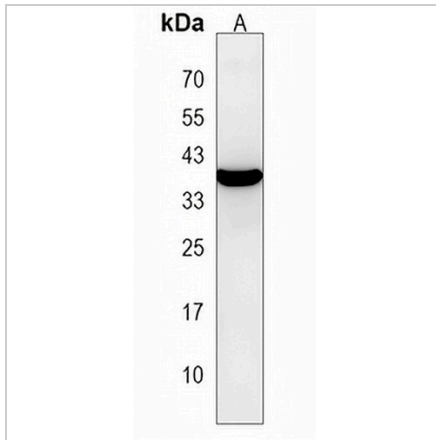
Description	Rabbit polyclonal antibody to mPR beta
Specificity	Recognizes endogenous levels of mPR beta protein.
Antibody Type	Primary antibody
Immunogen	KLH-conjugated synthetic peptide encompassing a sequence within the C-terminal region of human mPR beta. The exact sequence is proprietary.
Purification	The antibody was purified by immunogen affinity chromatography.
Molecular Weight	Predicted: 40 kD; Observed: 38 kD
Form/Buffer	Liquid in 0.42% Potassium phosphate, 0.87% Sodium chloride, pH 7.3, 30% glycerol, and 0.01% sodium azide.
Alternative Names	C6orf33; LMPB1; MPRB; Membrane progesterin receptor beta; mPR beta; Lysosomal membrane protein in brain 1; Progesterin and adipoQ receptor family member 8; Progesterin and adipoQ receptor family member VIII
Gene Symbol	PAQR8
Entrez Gene	85315(Human); 74229(Mouse)
SwissProt	Q8TEZ7(Human); Q80ZE5(Mouse)

*AREX continuously optimizes our products. Webpage content may not reflect the latest updates. For inquiries, please contact info@arexbio.com or your local distributor.

*Clone Number, Reactivity, Source/Host and Clonality can be found in the product name and Key Features section above.

DATASHEET**mPR beta Rabbit Polyclonal Antibody**

CAT. NO. APA18107

DATA

Western blot analysis of mPR beta expression in MDAMB453 (A) whole cell lysates.
(Predicted band size: 40 kD; Observed band size: 38 kD)

STORAGE

Store at 4°C short term. For long term storage, store at -20°C, avoiding freeze/thaw cycles.

NOTE

For Research Use Only. Not for diagnostic, therapeutics, prophylactic or in vivo use.