

**DATASHEET**

**COX7A1 Rabbit Polyclonal Antibody**

CAT. NO. APA18118

**KEY FEATURES**

Target	COX7A1	Source / Host	Rabbit
Reactivity	Human, Mouse	Clonality	Polyclonal
Applications	WB	Conjugation	Unconjugated
Form / Buffer	Liquid in 0.42% Potassium phosphate, 0.87% Sodium chloride, pH 7.3, 30% glycerol, and 0.01% sodium azide.		Storage at-20°C

**BACKGROUND**

Component of the mitochondrial respiratory complex IV (CIV, also named cytochrome c oxidase complex), the last enzyme in the mitochondrial electron transport chain which drives oxidative phosphorylation . The CIV complex is the component of the respiratory chain that catalyzes the reduction of oxygen to water . Acts as an assembly factor that specifically drives the homodimerization of CIV complexes, mediating the formation of mitochondrial respiratory supercomplexes (respirasomes) containing two CIV: supercomplexes with two molecules of CIV show improved activity . Despite being highly expressed in brown adipose tissue, not required for thermogenesis .

**APPLICATION**

To ensure optimal assay performance, AREX recommends conducting reagent titration tailored to each testing system for optimal detection results.

WB	1:500 - 1:1000
----	----------------

\*Results are sample-specific. Please refer to your local assay conditions and test parameters for reference.

**PRODUCT OVERVIEW**

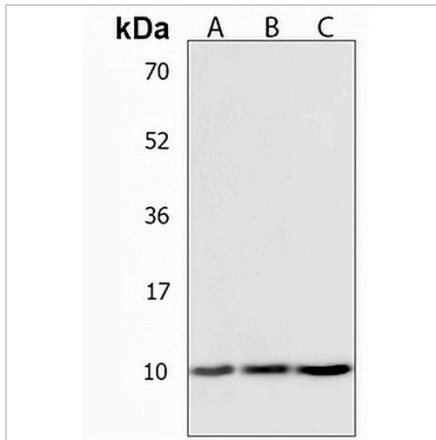
Description	Rabbit polyclonal antibody to COX7A1
Specificity	Recognizes endogenous levels of COX7A1 protein.
Antibody Type	Primary antibody
Immunogen	KLH-conjugated synthetic peptide encompassing a sequence within the Central region of human COX7A1. The exact sequence is proprietary.
Purification	The antibody was purified by immunogen affinity chromatography.
Molecular Weight	Predicted: 9 kD; Observed: 10 kD
Form/Buffer	Liquid in 0.42% Potassium phosphate, 0.87% Sodium chloride, pH 7.3, 30% glycerol, and 0.01% sodium azide.
Alternative Names	COX7AH; Cytochrome c oxidase subunit 7A1, mitochondrial; Cytochrome c oxidase subunit VIIa-heart; Cytochrome c oxidase subunit VIIa-H; Cytochrome c oxidase subunit VIIa-muscle; Cytochrome c oxidase subunit VIIa-M
Gene Symbol	COX7A1
Entrez Gene	1346(Human); 12865(Mouse)
SwissProt	P24310(Human); P56392(Mouse)

\*AREX continuously optimizes our products. Webpage content may not reflect the latest updates. For inquiries, please contact [info@arexbio.com](mailto:info@arexbio.com) or your local distributor.

\*Clone Number, Reactivity, Source/Host and Clonality can be found in the product name and Key Features section above.

**DATASHEET****COX7A1 Rabbit Polyclonal Antibody**

CAT. NO. APA18118

**DATA****STORAGE**

Store at 4°C short term. For long term storage, store at -20°C, avoiding freeze/thaw cycles.

**NOTE**

For Research Use Only. Not for diagnostic, therapeutics, prophylactic or in vivo use.