

DATASHEET

APRG1 Rabbit Polyclonal Antibody

CAT. NO. APA18126

KEY FEATURES

Target	APRG1	Source / Host	Rabbit
Reactivity	Human	Clonality	Polyclonal
Applications	WB	Conjugation	Unconjugated
Form / Buffer	Liquid in 0.42% Potassium phosphate, 0.87% Sodium chloride, pH 7.3, 30% glycerol, and 0.01% sodium azide.		Storage at -20°C

BACKGROUND

APRG1 tumor suppressor candidate (APRG1), also known as AP20 region protein 1. Subcellular location: Membrane Tissue specificity: Expressed at high levels in the pancreas and placenta; Expressed at high levels in the kidney Induction: Expression is lower in malignant breast tissue than in normal tissue

APPLICATION

To ensure optimal assay performance, AREX recommends conducting reagent titration tailored to each testing system for optimal detection results.

WB	1:500 - 1:1000
----	----------------

*Results are sample-specific. Please refer to your local assay conditions and test parameters for reference.

PRODUCT OVERVIEW

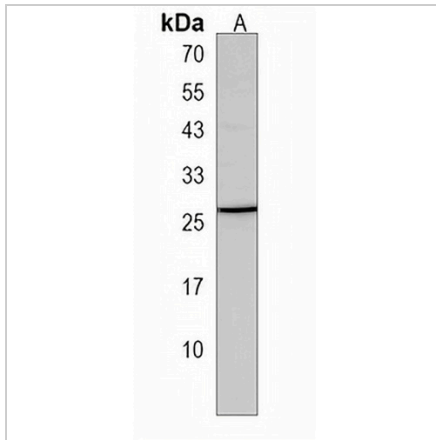
Description	Rabbit polyclonal antibody to APRG1
Specificity	Recognizes endogenous levels of APRG1 protein.
Antibody Type	Primary antibody
Immunogen	KLH-conjugated synthetic peptide encompassing a sequence within the Central region of human APRG1. The exact sequence is proprietary.
Purification	The antibody was purified by immunogen affinity chromatography.
Molecular Weight	Predicted: 18 kD; Observed: 26 kD
Form/Buffer	Liquid in 0.42% Potassium phosphate, 0.87% Sodium chloride, pH 7.3, 30% glycerol, and 0.01% sodium azide.
Alternative Names	C3orf35; AP20 region protein 1
Gene Symbol	APRG1
Entrez Gene	339883(Human)
SwissProt	Q8IVJ8(Human)

*AREX continuously optimizes our products. Webpage content may not reflect the latest updates. For inquiries, please contact info@arexbio.com or your local distributor.

*Clone Number, Reactivity, Source/Host and Clonality can be found in the product name and Key Features section above.

DATASHEET**APRG1 Rabbit Polyclonal Antibody**

CAT. NO. APA18126

DATA

Western blot analysis of APRG1 expression in HL60 (A) whole cell lysates. (Predicted band size: 18 kD; Observed band size: 26 kD)

STORAGE

Store at 4°C short term. For long term storage, store at -20°C, avoiding freeze/thaw cycles.

NOTE

For Research Use Only. Not for diagnostic, therapeutics, prophylactic or in vivo use.